

Elbrus – Day 1:

Insurgency

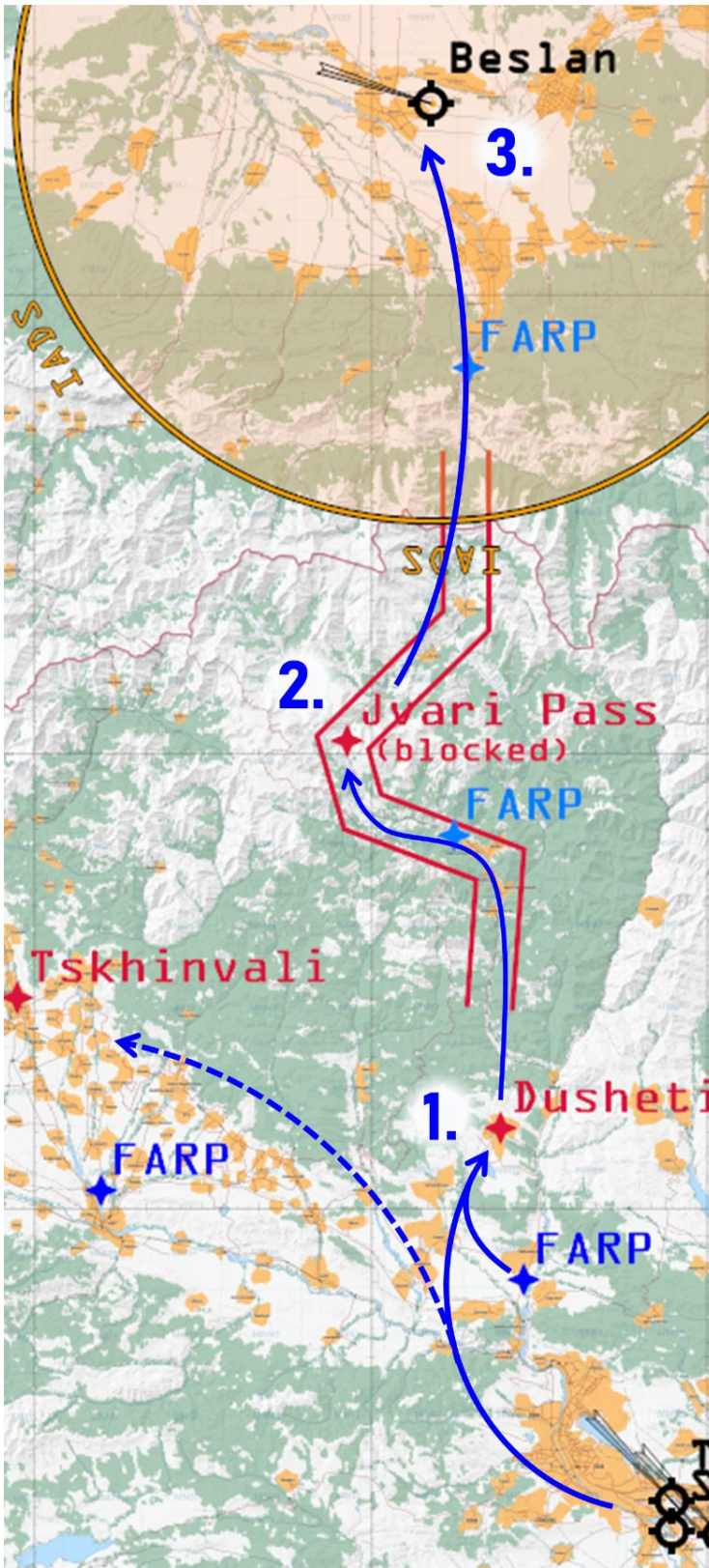


<https://tactical-dcs.com/>

<https://discord.gg/tacticaldcs>

MAP OVERVIEW

Elbrus Day 1



Beslan (WP10): insurgent operated airfield

FARP Beslan south (WP9, active after clearing the pass)

Jvari Pass (WP6): blocked by insurgent ground forces

FARP Dusheti north (WP4, active after clearing Dusheti)

Dusheti (WP3): occupied by insurgent ground forces

FARP Dusheti south

**Allied airfields:
Tbilisi (NATO)
Vaziani (Georgia)**

Comms Menu > "F10. other" > "Mission Status" provides information about mission progress and remaining time until server restart

	UHF	VHF				preset
GUARD	243.000	121.500				-
Common A2A	248.000	120.000				2
Common A2G	248.500	120.500				3
GCI (human)	249.000	119.000				4
E3-Sentry AWACS (AI)	249.300	-				5

	UHF	VHF	TACAN	ILS	active RWY	preset
Kutaisi	250.200	134.200	44X (KTS)	109.750	08	6
Tbilisi-Lochini	267.200	138.200	25X (GBT)	110.300	13R	7
Vaziani	269.200	140.200	22X (VAS)	108.750	13	8

	UHF	VHF	TACAN	Altitude		preset
Arco 4-1 (MPRS)	244.100	-	41Y	26 000 ft		9
Shell 6-1 (Boom)	246.100	-	61Y	21 000 ft		10

		Latitude	Longitude	Altitude
	Tbilisi-Lochini	N 41°40'01"	E 44°57'22"	1575 ft
	Vaziani	N 41°37'44"	E 45°01'38"	1526 ft
WP 1	Bullseye	N 42°46'29"	E 43°48'14"	-
WP 2	Tskhinvali	N 43°12'30"	E 44°35'20"	1722 ft
WP 3	Dusheti	N 42°05'11"	E 44°41'04'	2769 ft
WP 4-9	Road through the Pass			
WP 4	Blue FARP (active once Dusheti is cleared)	N 42°25'08"	E 44°35'24'	4026 ft
WP 6	Jvari Pass (highest point)	N 42°30'29"	E 44°27'10"	7546 ft
WP 9	Blue FARP (active once the Pass is cleared)	N 42°55'11"	E 44°39'12"	2408 ft
WP 10	Beslan Airfield	N 43°12'20"	E 44°36'20"	1722 ft

OPERATION *Broken Sickle*



OBJECTIVES:

primary

- liberation of the town **Dusheti**
- clearing the road through **Jvari Mountain Pass**
- neutralise air defences around **Beslan Airfield**
- provide **CAS** to allied ground forces (will deploy once AD at the airfield is neutralised)

secondary

- deploy special forces via airlift at **Tskhinvali**, free the encircled UN convoy

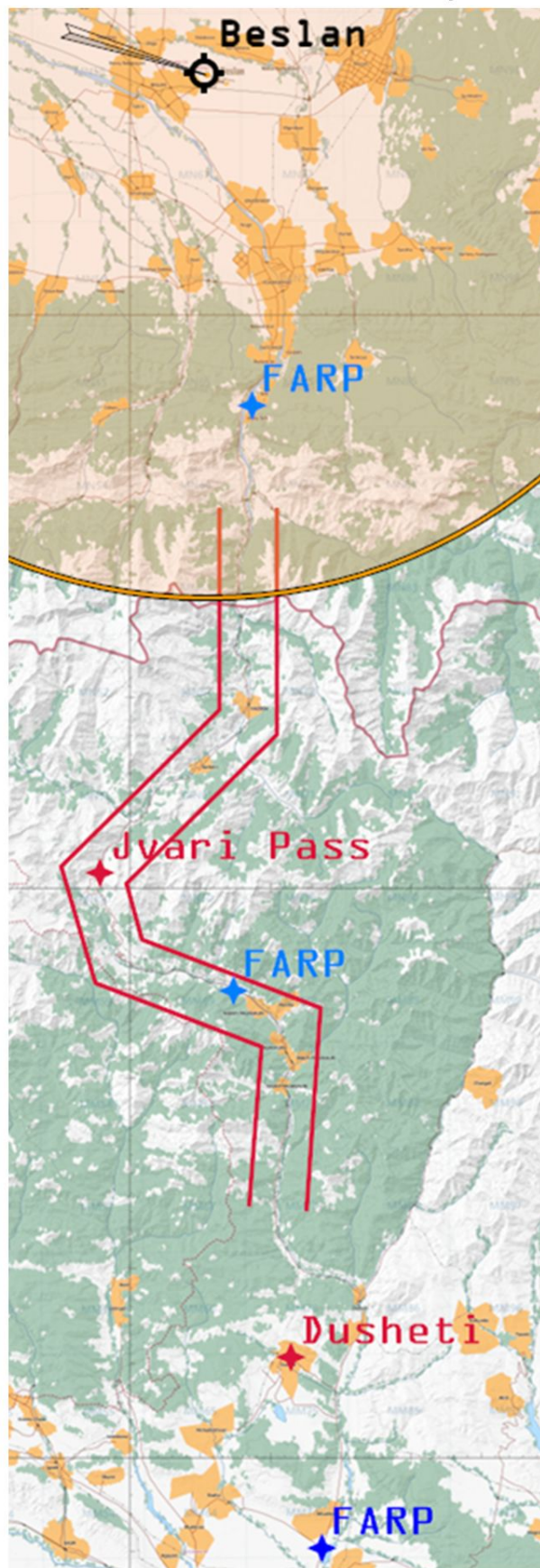
tertiary

- find and destroy the power plant in the region to degrade the integrated air defences

Tskhinvali (WP2) (JTAC: 1682)	N 43°12'30" E 44°35'20" 1722 ft
Dusheti (WP3) (JTAC: 1683)	N 42°05'11" E 44°41'04" 2769 ft
Jvari Mountain Pass (WP6)	N 42°30'29" E 44°27'10" 7546 ft
Beslan Airfield (WP10)	N 43°12'20" E 44°36'20" 1722 ft

Tactical DCS

Elbrus Day 1



Dynamic PvE Server



Tskhinvali:

insurgent infiltrated town (WP2)

N 42°13'36"

E 43°58'12"

2789 ft

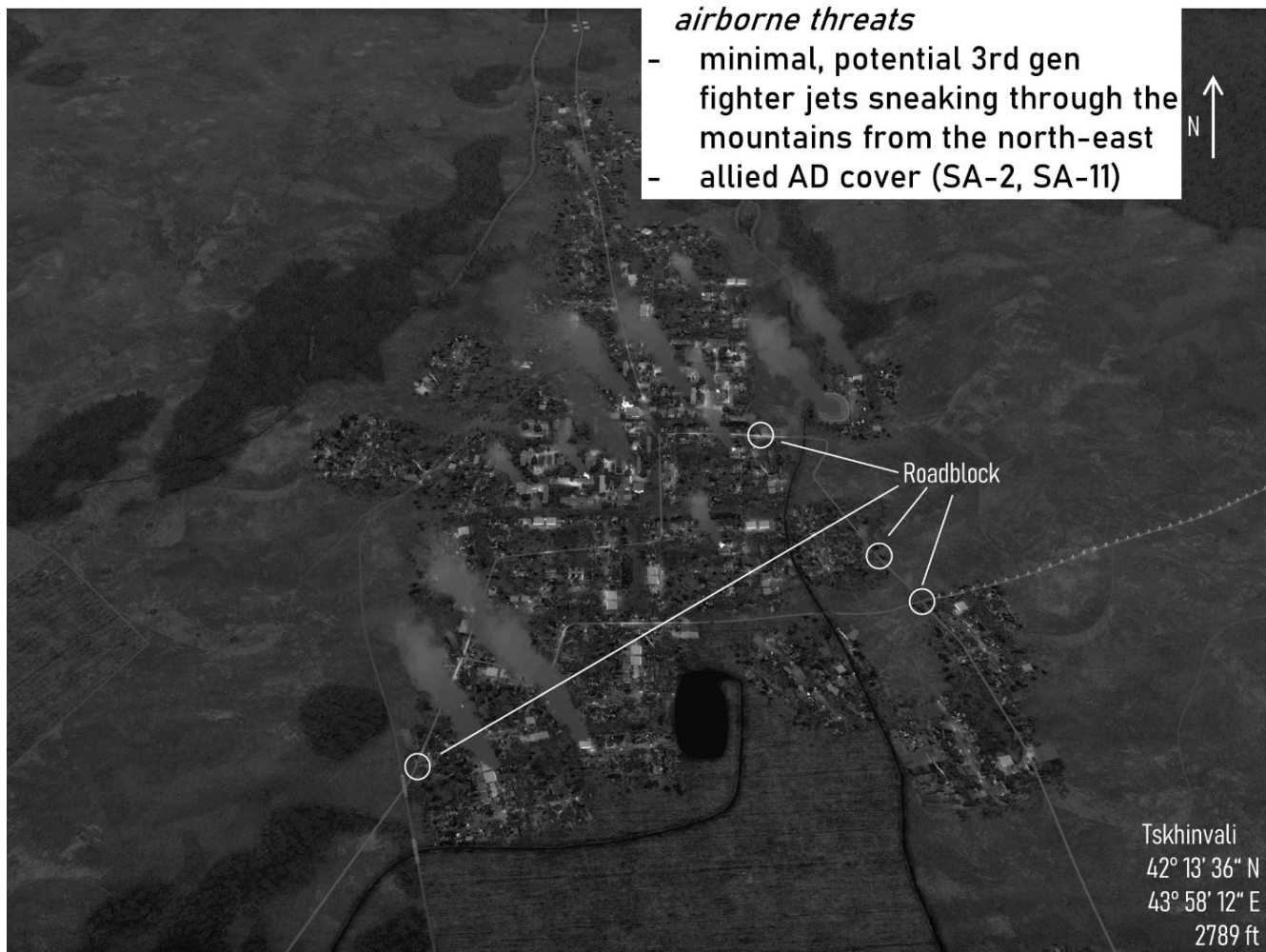
INTEL:

ground forces

- irregular troops, mostly infantry, minimal light armour infiltrated the town
- expect small arms and man portable AD
- UN convoy trapped in the town (deploys white smoke)
- civilian population has NOT evacuated, rumours of civilian hostages, ID targets before engagement
- deploy special forces via airlift

airborne threats

- minimal, potential 3rd gen fighter jets sneaking through the mountains from the north-east
- allied AD cover (SA-2, SA-11)





Dusheti (JTAC: 1683):
insurgent occupied town (WP3)

N 42°05'11"
E 44°41'04"
2769 ft

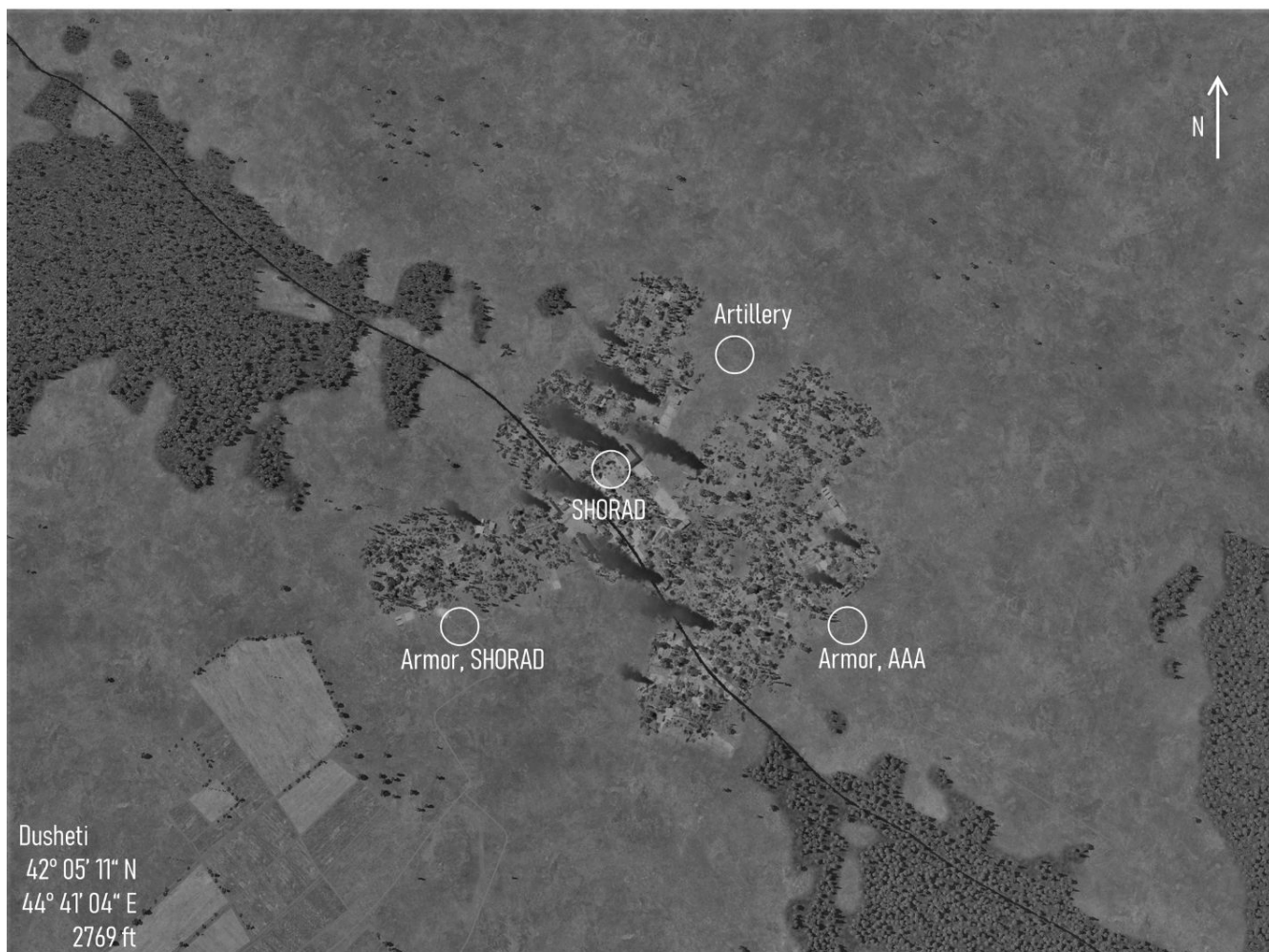
INTEL:

ground forces

- infantry and armour in and around the town
- Artillery emplacement on the northern edge of town
- AAA and mostly short range IR guided AD

airborne threats

- minimal, potential 3rd gen fighter jets sneaking through the mountains from the north
- allied AD cover (SA-2, SA-11)





Jvari Mountain Pass:

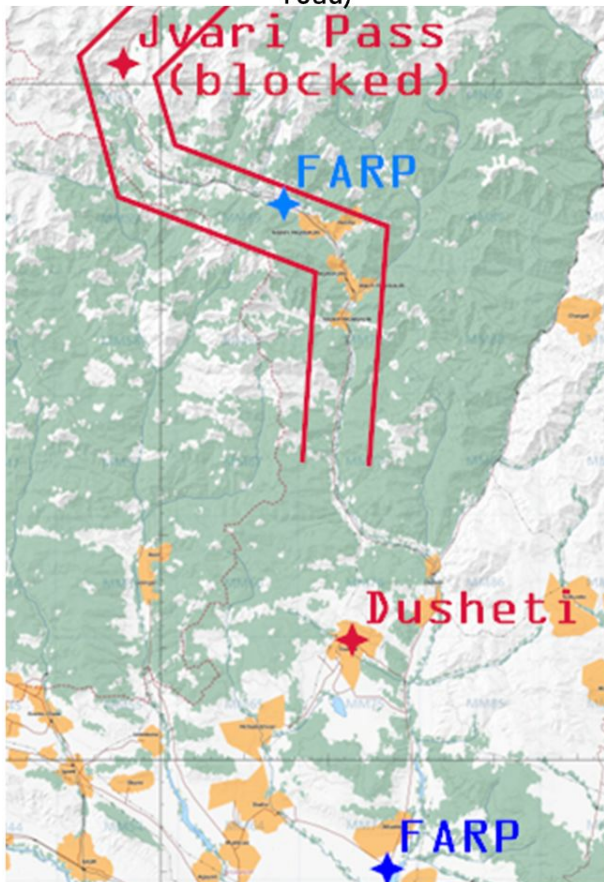
road blocked by insurgent forces
(WP4-9)

N 42°30'29"

E 44°27'10"

7546 ft

(highest point, additional insurgent forces
are expected to be positioned along the
road)



Tactical DCS

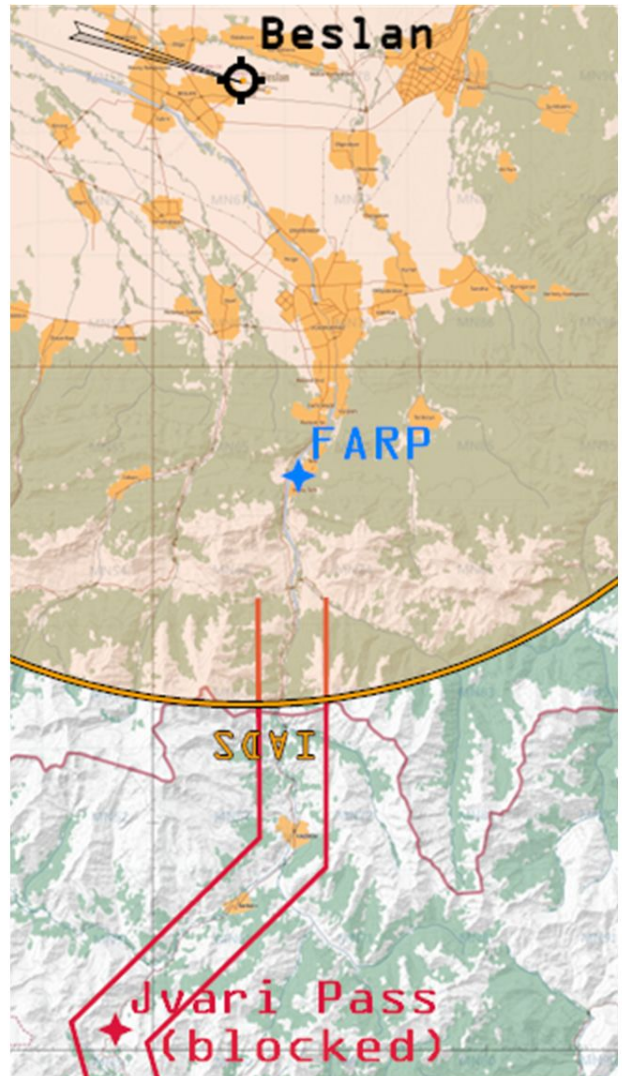
INTEL:

ground forces

- infantry and armour block the road at several positions
- AAA and short range IR guided AD present, possibly radar guided short range AD

airborne threats

- 3rd gen fighter jets out of Beslan on CAP north of the mountains
- aircraft from Beslan might try to sneak through the mountains



Dynamic PvE Server



Beslan Airfield:
used by insurgent forces (WP10)

N 43°12'30"
E 44°35'20"
1722 ft

INTEL:

ground forces

- armour, AAA and IR-SHORAD around the airfield
- integrated air defences comprising of SA-2 and SA-3 sites in the area

airborne threats

- 3rd gen fighter jets flying CAP
- modern Russian jets stationed at Mozdok seem to hold back, but will engage in case of any trespassing too far north

