

Elbrus - Day 4:

Black Sea

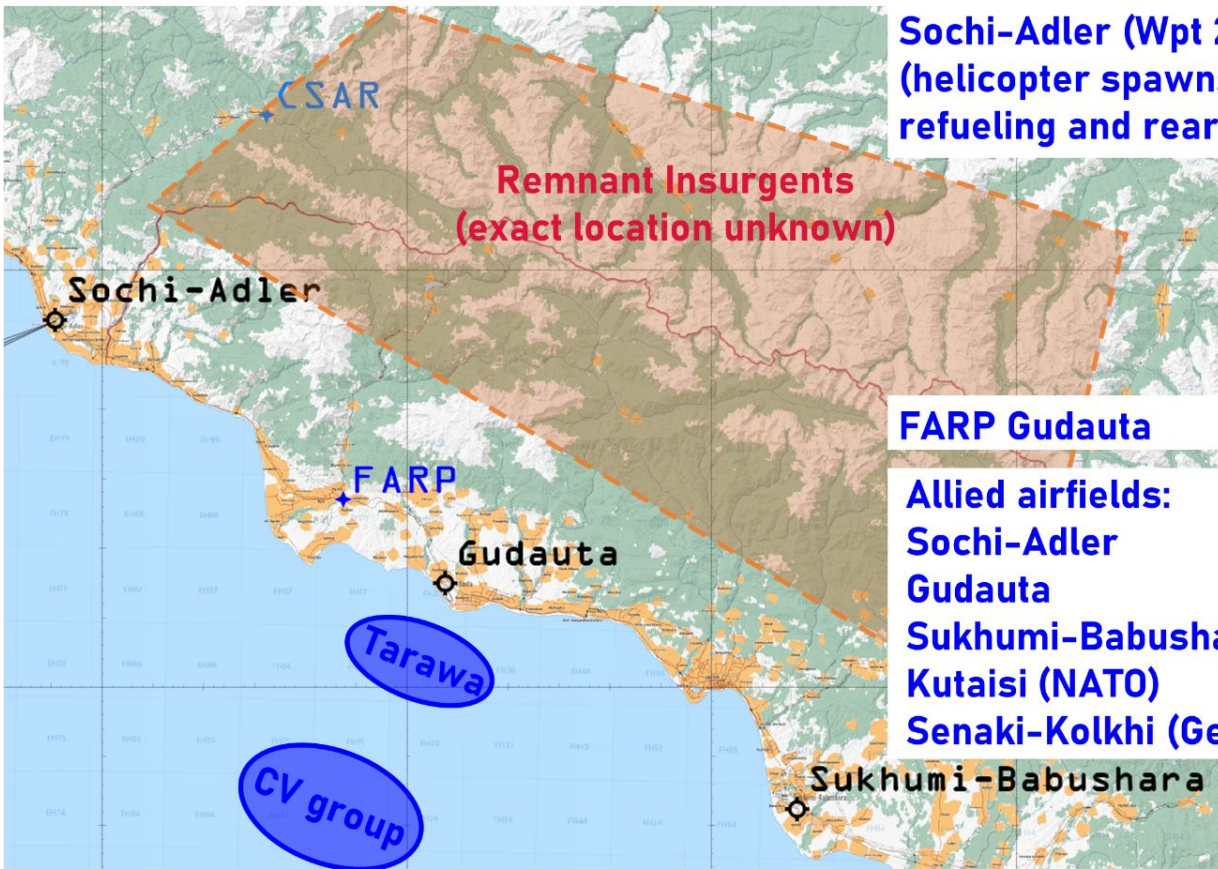
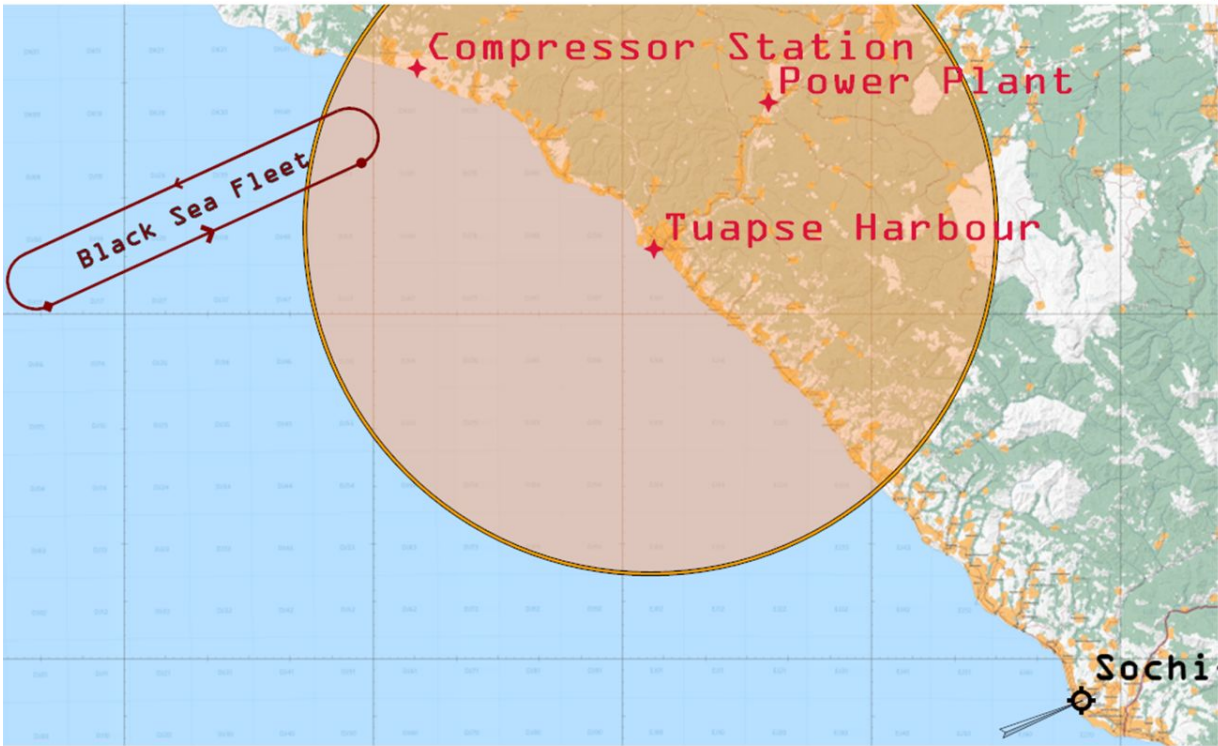


<https://tactical-dcs.com/>

<https://discord.gg/tacticaldcs>

MAP OVERVIEW

Elbrus Day 4



Sochi-Adler (Wpt 2)
(helicopter spawns,
refueling and rearming)

FARP Gudauta

Allied airfields:
Sochi-Adler
Gudauta
Sukhumi-Babushara,
Kutaisi (NATO)
Senaki-Kolkhi (Georgia)

Comms Menu > "F10. other" > "F1. Status" provides information about mission progress and remaining time until server restart

COMMS+NAV OVERVIEW

Elbrus Day 4

	UHF	VHF				preset
GUARD	243.000	121.500				
Common A2A	248.000	120.000				2
Common A2G	248.500	120.500				3
GCI (human)	249.000	119.000				4
E2-D AWACS (AI)	249.200	-				5

	UHF	VHF	TACAN	ILS	active RWY	preset
Gudauta	259.200	130.200	-	-	15	6
Sukhumi	251.200	129.200	-	-	12	7
Senaki-Kolkhi	253.200	132.200	31X (TSK)	108.900	09	8
Kutaisi	250.200	134.200	44X (KTS)	109.750	08	9
Sochi-Adler	252.200	127.200	-	111.100	06	10

	UHF	VHF	TACAN	Altitude		preset
Arco 3-1 (MPRS)	243.100	-	31Y	25 000 ft		11
Shell 5-1 (Boom)	245.100	-	51Y	20 000 ft		12
Shell 6-1 (Boom)	246.100	-	61Y	10 000 ft		13
Texaco 7-1 (MPRS)	240.100	-	72Y	7 000 ft	CVN-72 recovery	

	UHF	VHF	TACAN	ICLS		preset
USS Abraham Lincoln (CVN-72)	240.000	-	72X	12	Super- Carrier	14
USS John C. Stennis (CVN-74)	241.000	-	74X	14		15
USS Tarawa (LHA-1)	242.000	-	11X	-		16

		Latitude	Longitude	Altitude
WP 1	Bullseye	N 43°33'04"	E 39°50'31"	-
WP 2	Sochi-Adler	N 43°26'40"	E 39°56'33"	98 ft
WP 7	Gornyy Power Plant	N 44°18'16"	E 39°18'06"	801 ft
WP 8	Tuapse Harbour	N 44°05'38"	E 39°03'36"	0 ft
WP 9	Beregovaya Compressor Station	N 44°21'31"	E 38°35'46"	595 ft



Gorny Power Plant (WP7)	N 44°18'16" E 39°18'06" 801 ft
Tuapse Harbour (WP8)	N 44°05'38" E 39°03'36"
Beregovaya Compressor Station (WP9)	N 44°21'31" E 38°35'46" 595 ft

OBJECTIVES:

primary

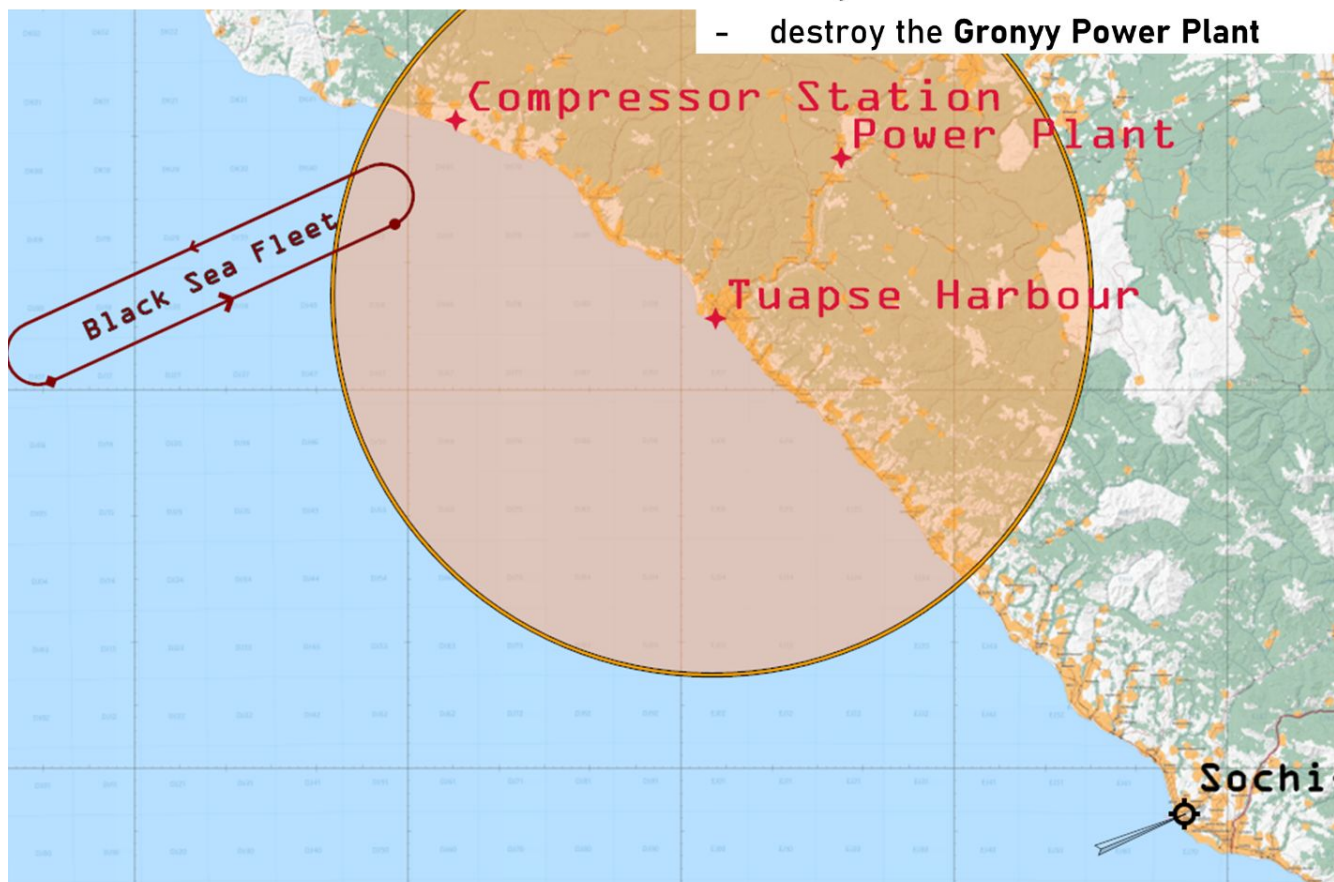
- Destroy damaged Russian naval assets at **Tuapse Harbour**
- Destroy the **Beregovaya Compressor Station**
- Neutralise the main surface assets of the Russian **Black Sea Fleet**

secondary

- Neutralise remnant insurgent ground forces north of Gudauta
- neutralise the **SA-10** site near Tuapse

tertiary

- destroy the **Gronyy Power Plant**





INTEL:

ground forces

- Remnant insurgent APC, Tanks and Trucks
- possible AAA and other SHORAD

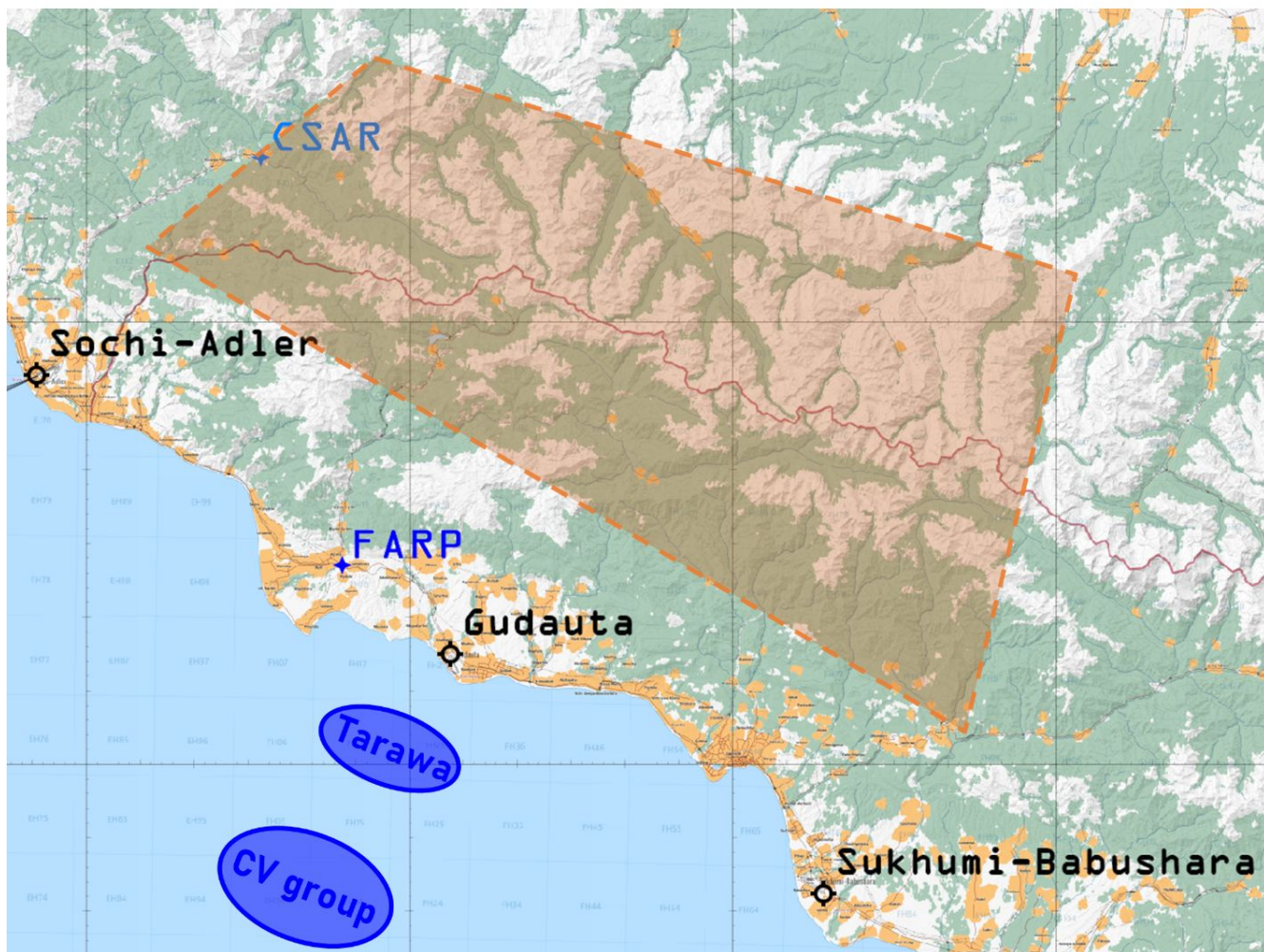
airborne threats

- minimal, Russian AF has abandoned the area

Remanant Insurgents:
dispersed in the mountains

Waypoints 3 – 6 mark the edges of the search area

(6 groups are dispersed in the search area, upon destruction of the first unit of a group a map marker is placed on the group's location)





INTEL:

ground forces

- possible AAA and other SHORAD
- possibly under cover by SA-10 and/or other systems

airborne threats

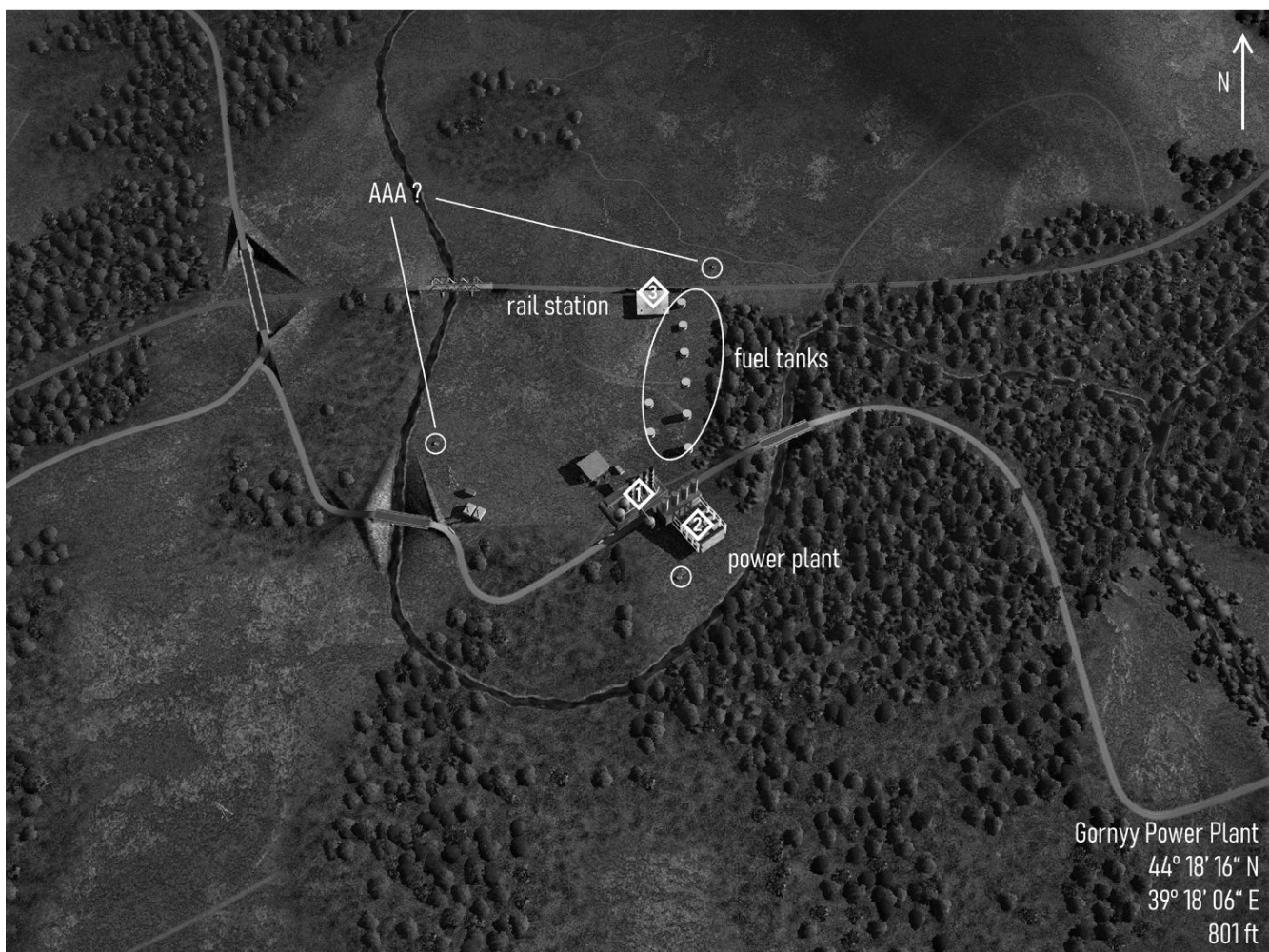
- modern Russian aircraft from airfields in the north are providing CAP north-west and north-east

Gornyy:

Russian Power Plant (WP7)

N 44°18'16"
E 39°18'06"
801 ft

(all three marked building need to be destroyed, one of them provides power for SA-10 site near Tuapse)





Tuapse:

Russian Industrial Harbour (WP8)

N 44°05'38"

E 39°03'36"

INTEL:

ground forces

- under cover by SA-10 and/or other systems

airborne threats

- modern Russian aircraft from airfields in the north are providing CAP north-west and north-east

naval

- damaged Russian warships in the harbour (4 identified targets)





INTEL:

ground forces

- possible AAA and other SHORAD
- under cover by SA-10 and/or other systems

airborne threats

- modern Russian aircraft from airfields in the north are providing CAP north-west and north-east

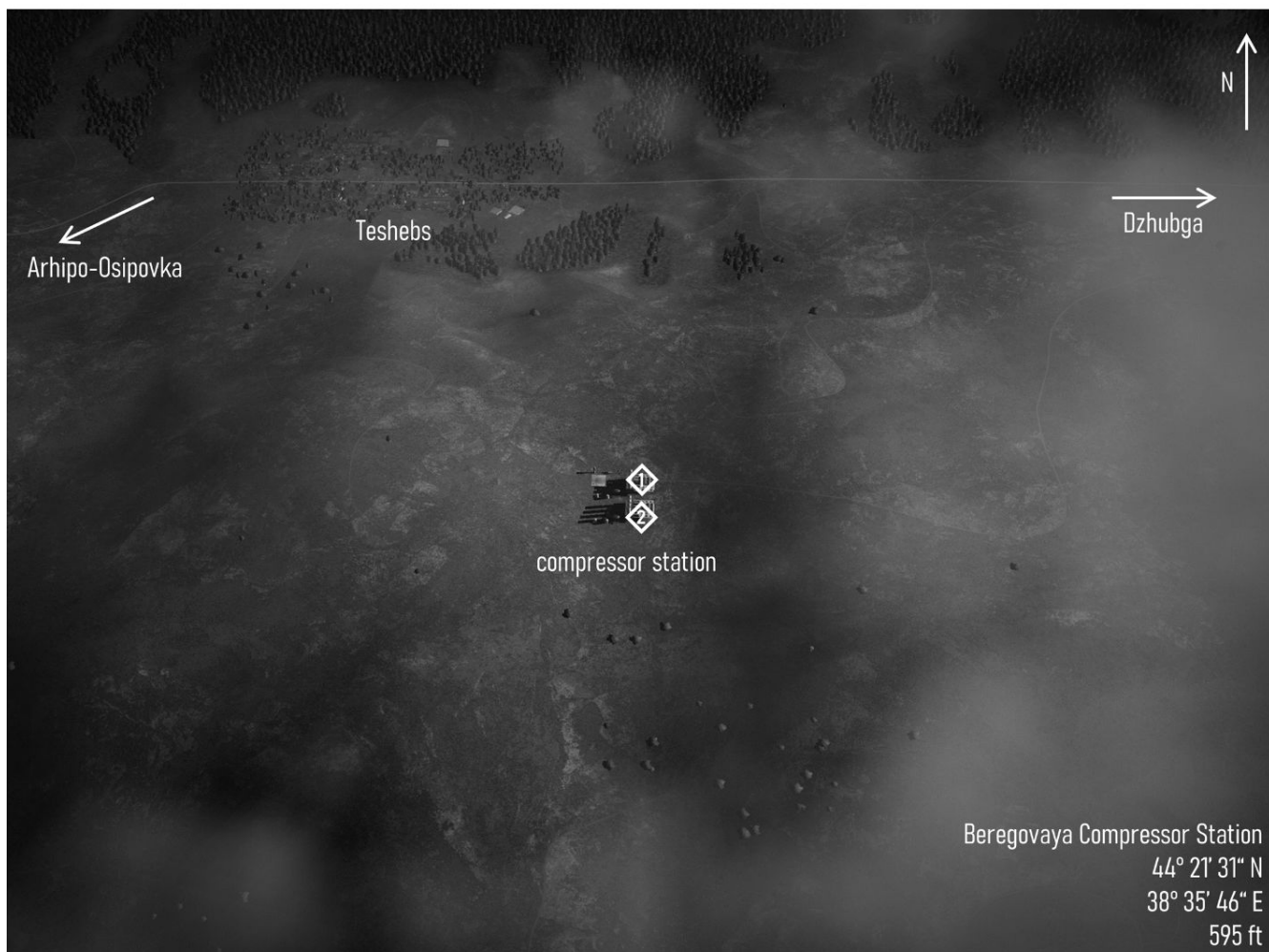
Beregovaya:

Compressor Station for gas pipeline (WP9)

N 44°21'31"

E 38°35'46"

595 ft





INTEL:

- left moorings at Sevastopol last evening
- at least 2 large surface vessels spotted
- expect additional escorts and air cover

Black Sea Fleet:

exact location unknown



Black Sea Fleet



INTEL:

confirmed available surface vessels:

- a **Slava** class cruiser
- at least one **Krivak-II** frigate
- multiple older **Grisha-V** class ASW-corvettes
- multiple **Tarantul-III** class missile corvettes

30th Surface Ship Division:
Black Sea Fleet - Russian Navy



Grisha-V



Tarantul-III

Krivak-II
3 575 tons
2 x SA-N-4 'Gecko'



Slava
12 490 tons
8 x 8 SA-N-6 'Grumble'
2 x 20 SA-N-4 'Osa'
CIWS
long range ASM