

Operation Green Cedar Day 3



<https://tactical-dcs.com/>

<https://discord.gg/tacticaldcs>

QUICK REFERENCE

Operation Green Cedar day 3

Common Freqs	UHF	VHF	AM	HF		Preset
GUARD	243.000	121.500				-
Common Ground	244.000	122.000				-
Common A2G	245.000	123.450				-
FAC(A)	246.000	122.500				-
Intraflight		126.500				-

Airfield Comms	UHF	VHF	TACAN	ILS	Active RWY	Preset
RAF Akrotiri	251.700	128.000	107X	109.700	10	-
Paphos	251.800	119.900	79X	-	11	-
Larnaca	251.850	121.200	-	-	04	-
Kingsfield	251.750	121.000	-	-	06	-
Gecitkale	252.050	120.000	-	-	09	-
Ercan	251.950	120.200	-	-	11	-
Lakatamia	251.900	120.200	-	-	17	-
FARP Oil Slick	-	127.500	-	-	-	-
Pinarbashi	252.100	121.000	-	-	16	-

		Latitude	Longitude	Altitude (ASL)
WP 0	RAF Akrotiri	N 34:35.433	E 032:59.283	65 ft
WP 1	Paphos	N 34:43.030	E 032:29.119	40 ft
WP 2	Larnaca	N 34:52.534	E 033:37.261	16 ft
WP 3	Kingsfield	N 35:00.888	E 033:42.981	276 ft
WP 4	Gecitkale	N 35:13.705	E 033:43.720	148 ft
WP 5	Ercan	N 35:09.123	E 033:30.301	312 ft
WP 6	Lakatamia	N 35:06.298	E 033:19.295	758 ft
WP 7	Nicosia Int'l-	N35:09.052	E033:16.081	722 ft
WP 8	Pinarbashi	N 35:16.460	E 033:16.081	771 ft
WP 9	FARP Oil Slick	N 34:43.431	E 33:17.891	16 ft

Objectives:

>>>Capture all airfields with troops. Troops can only be picked up at Akrotiri by the hangers mid field. And Larnaca under the control tower.

>>>Secure government buildings, Bank of Cyprus, Radisson Blue Hotel and UN Base with troops.

>>>Destroy Insurgent Command and Control, somewhere in the mountains, and/or eliminate scattered insurgents hiding in the mountains.

>>>Destroy the 3 Tank columns heading from the far east and North of Cyprus. They are each headed to Paphos, Akrotiri, and Larnaca

>>>Secure the hijacked Tanker sailing Northeast, from the Northwest part of the island.

>>> Al-Assad's support only goes so far. We suspect completing 80% of the missions will be enough to disburse the insurgency.

>>>Establishing a Farp near the Oil Refinery between Akrotiri and Larnaca will help alleviate the flight time for future missions
Farp Oil Slick

Objectives:

Radisson Blu Hotel

34°55'53"

33°38'12"

27 ft

UN Base

35°35'38"

33°58'29"

112 ft

Hospital

35°35'38"

33°58'29"

587 ft

Presidential Palace

35°35'38"

33°58'29"

569 ft

Telecoms Ministry

35°35'38"

33°58'29"

581 ft

Bank of Cyprus

35°35'38"

33°58'29"

507 ft

Finance Ministry

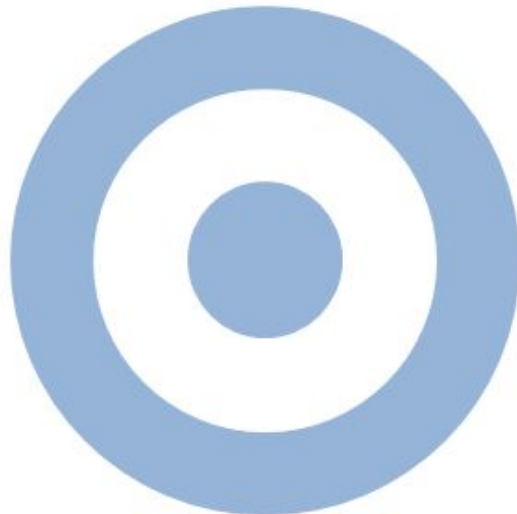
35°35'38"

33°58'29"

545 ft



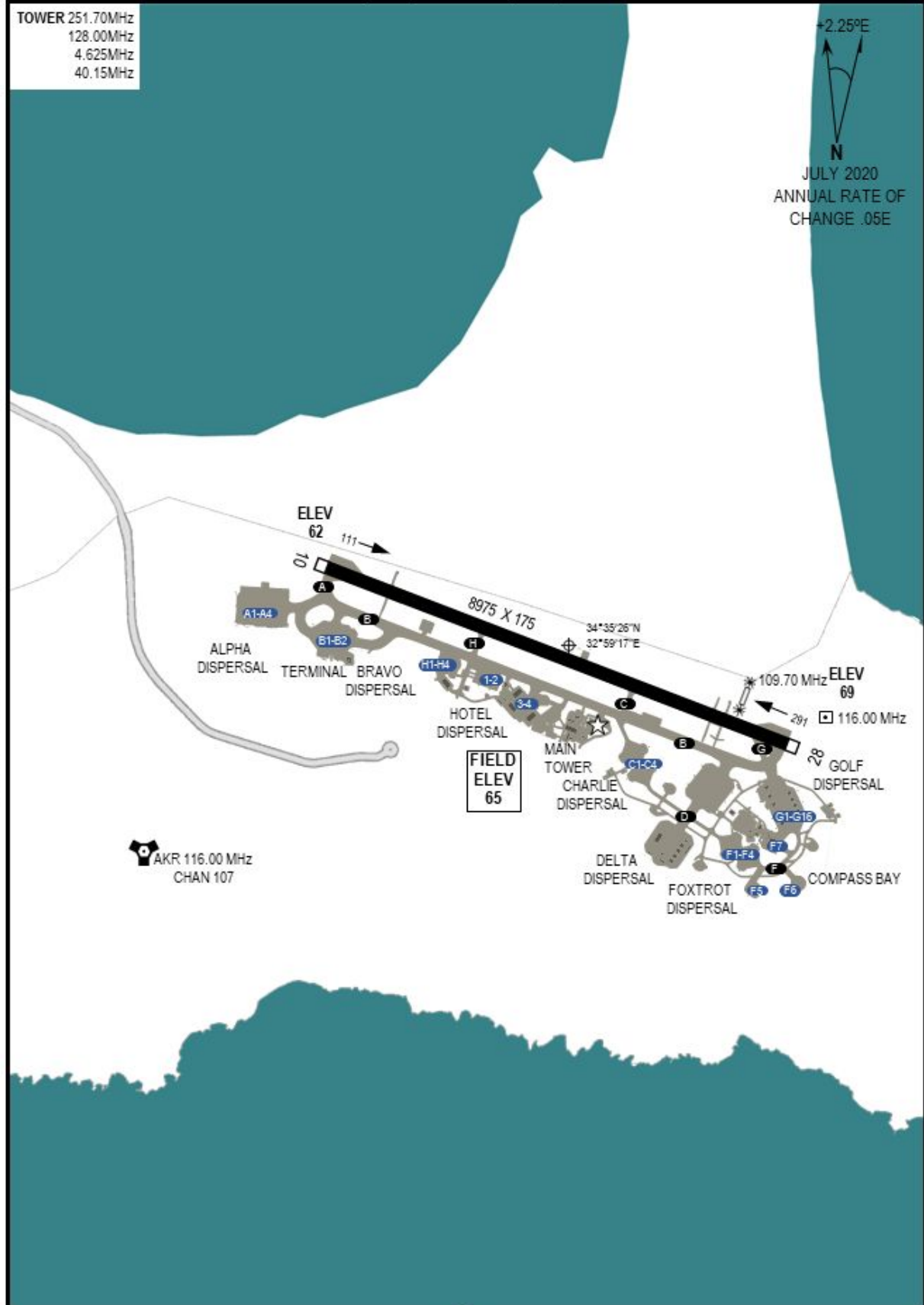
REPUBLIC OF CYPRUS



AIRPORT DIAGRAM

[USAF] SHU77-2406 [ICAO]

BRITISH OVERSEAS TERRITORIES, CYPRUS



DCS SYRIA EFFECTIVE: 06 JUL 2021

DCS SYRIA EFFECTIVE: 06 JUL 2021



18914

AIRPORT DIAGRAM

[USAF] SHU77-2406 [ICAO]

PAPHOS INTERNATIONAL (LCPH)

PAPHOS DISTRICT, CYPRUS

TOWER 251.80MHz
 119.90MHz
 4.675MHz
 40.250MHz

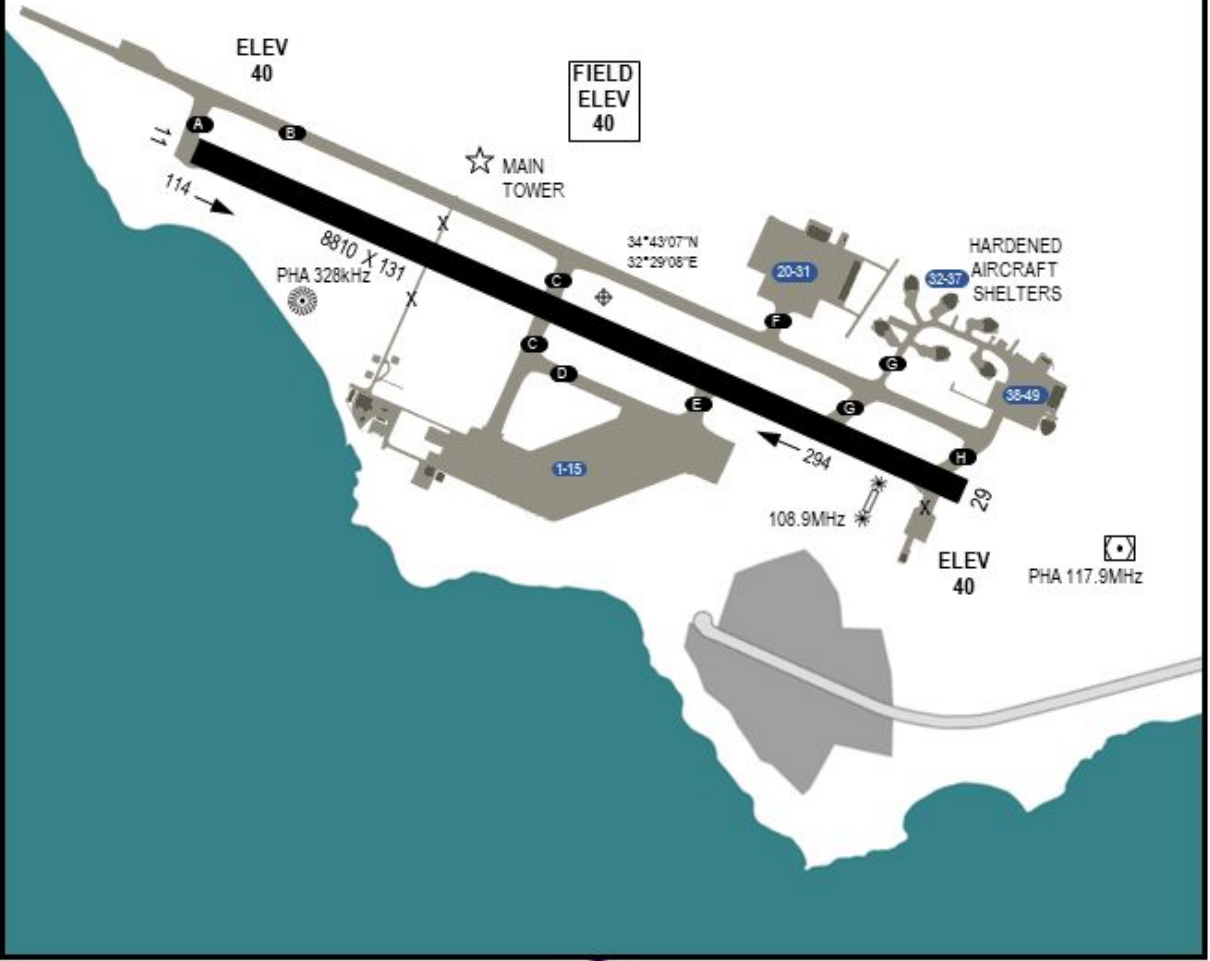
+2.25°E

N

JULY 2020
 ANNUAL RATE OF
 CHANGE .05E

DCS SYRIA EFFECTIVE: 06 JUL 2021

DCS SYRIA EFFECTIVE: 06 JUL 2021



AIRPORT DIAGRAM

18914



NOT FOR REAL NAVIGATION

PAPHOS DISTRICT, CYPRUS

PAPHOS INTERNATIONAL (LCPH)

TOWER 251.80MHz
 121.20MHz
 4.700MHz
 40.30MHz

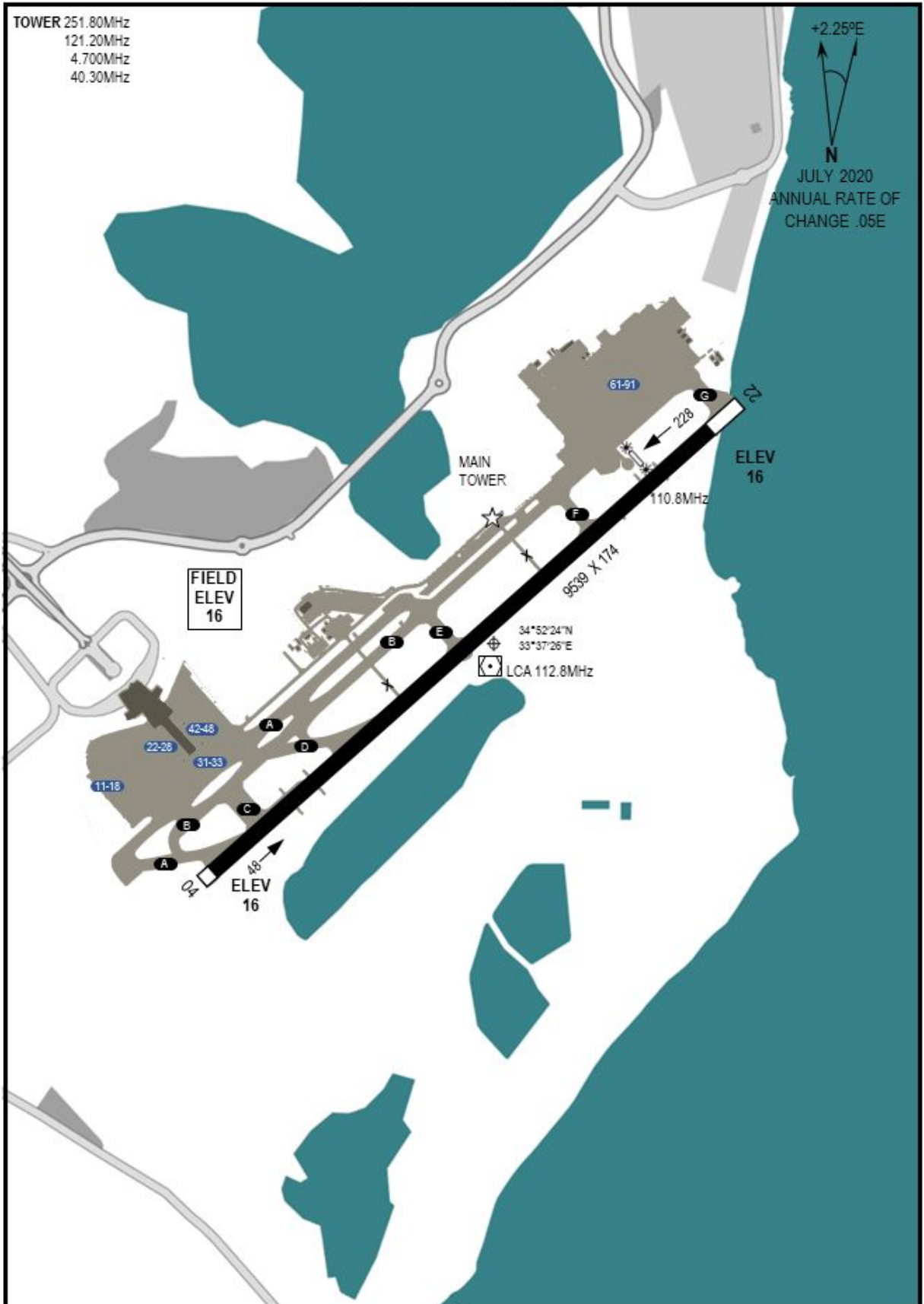
+2.25°E

N

JULY 2020
 ANNUAL RATE OF
 CHANGE .05E

DCS SYRIAEFFECTIVE: 06 JUL 2021

DCS SYRIAEFFECTIVE: 06 JUL 2021



18916

AIRPORT DIAGRAM

[USAF] SHU77-2406 [ICAO]

RAF KINGSFIELD (LCRE)
BRITISH OVERSEAS TERRITORIES, CYPRUS

TOWER 251.75MHz
121.00MHz
4.650MHz
40.20MHz

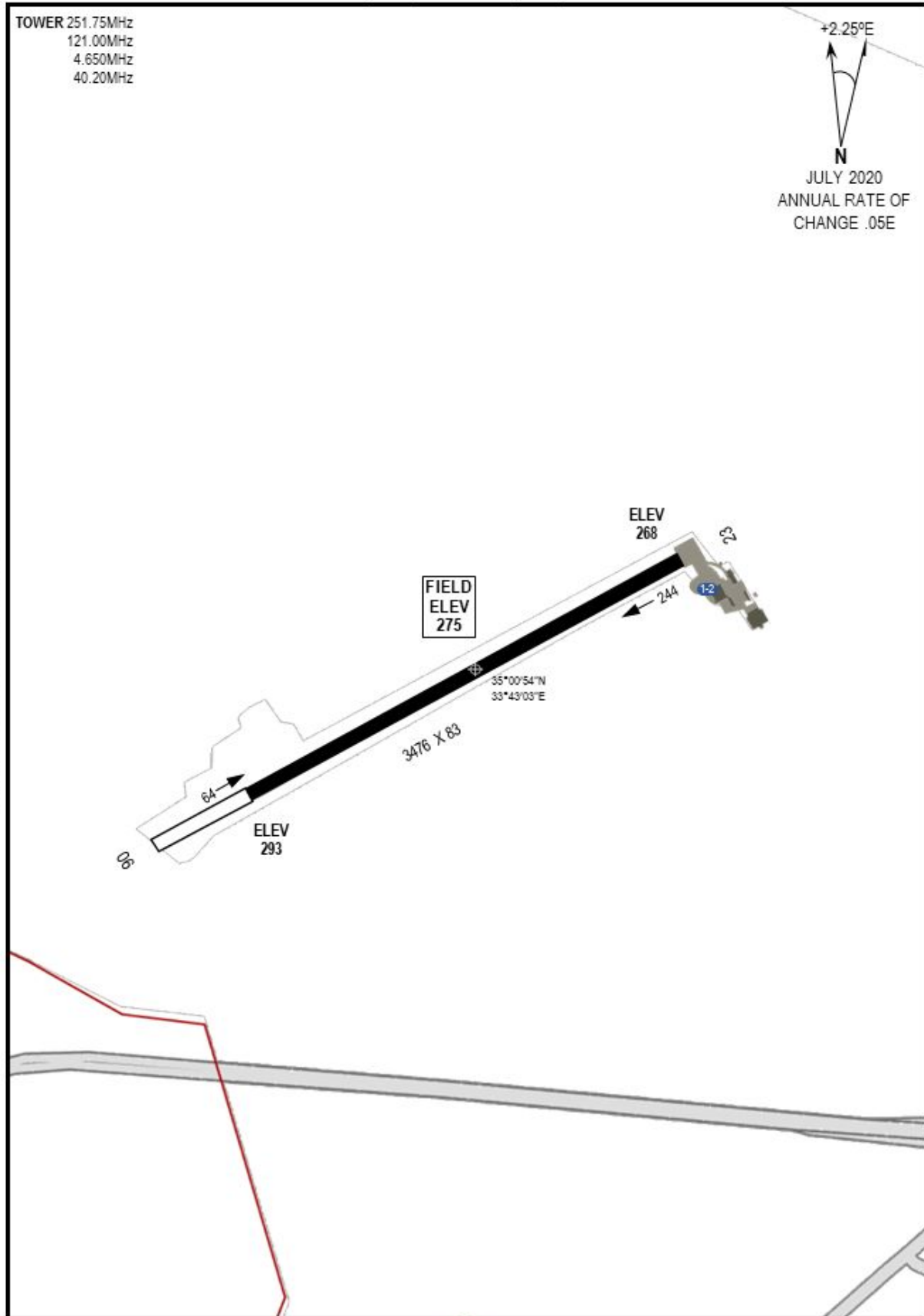
+2.25°E



JULY 2020
ANNUAL RATE OF
CHANGE .05E

DCS SYRIA EFFECTIVE: 06 JUL 2021

DCS SYRIA EFFECTIVE: 06 JUL 2021



AIRPORT DIAGRAM

18916



NOT FOR REAL NAVIGATION

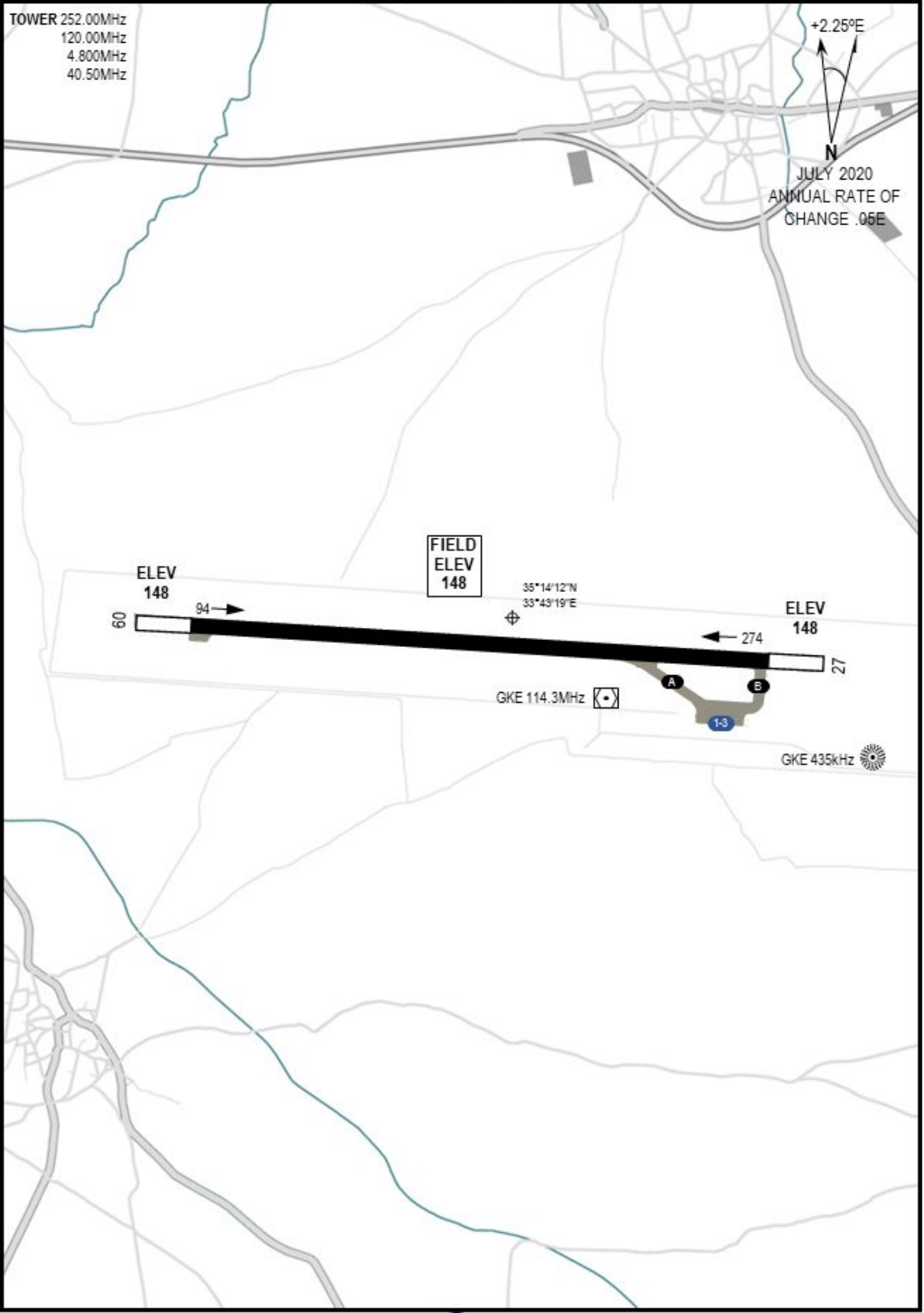
BRITISH OVERSEAS TERRITORIES, CYPRUS
RAF KINGSFIELD (LCRE)

18910

AIRPORT DIAGRAM

[USAF] SHU77-2406 [ICAO]

GEÇITKALE AIRBASE (LCGK)
FAMAGUSTA DISTRICT, NORTHERN CYPRUS



DCS SYRIA EFFECTIVE: 06 JUL 2021

DCS SYRIA EFFECTIVE: 06 JUL 2021

AIRPORT DIAGRAM

18910



NOT FOR REAL NAVIGATION

FAMAGUSTA DISTRICT, NORTHERN CYPRUS
GEÇITKALE AIRBASE (LCGK)

18909

AIRPORT DIAGRAM

[USAF] SHU77-2406 [ICAO]

ERCAN INTERNATIONAL (LCEN)
NICOSIA DISTRICT, NORTHERN CYPRUS

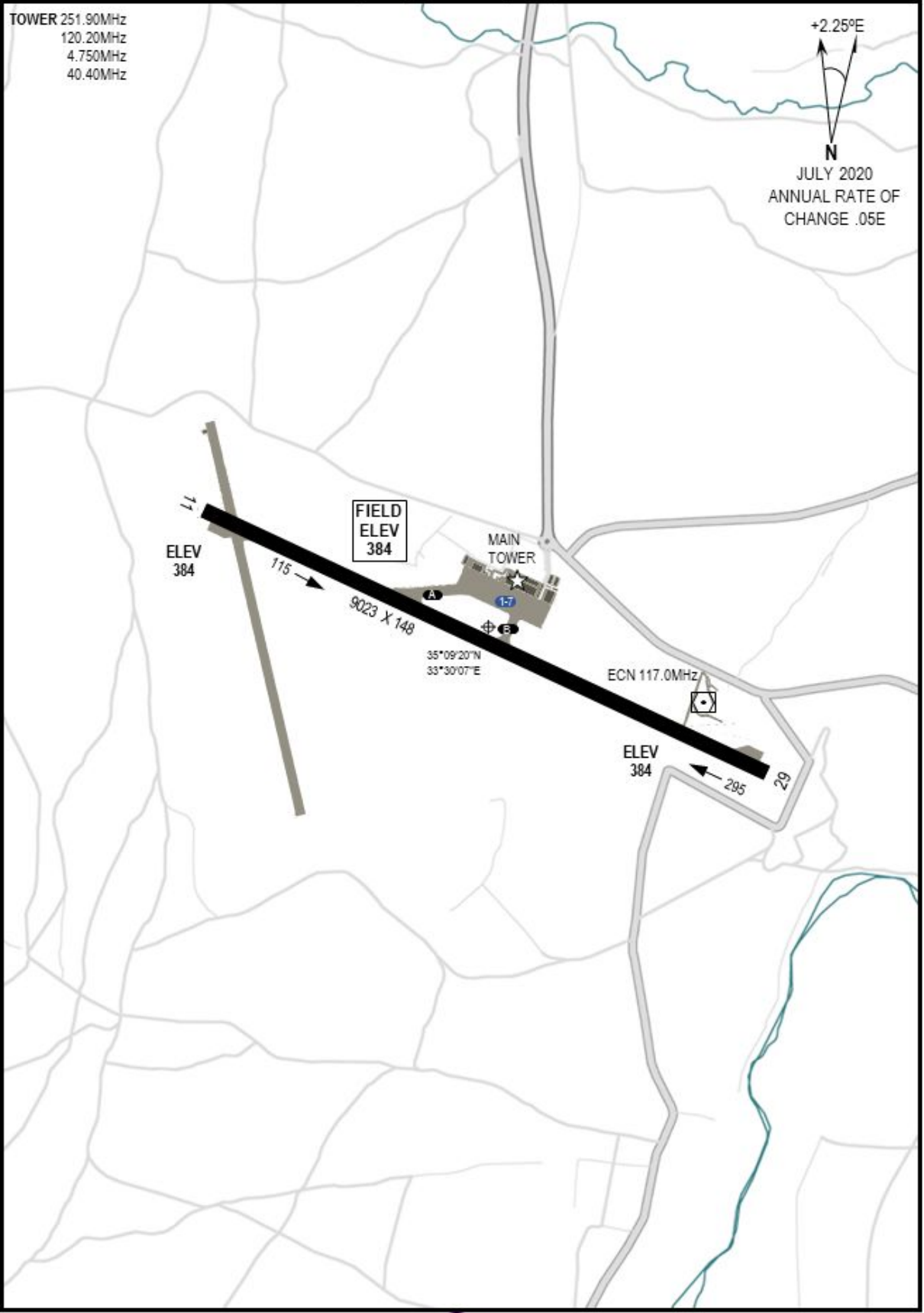
TOWER 251.90MHz
120.20MHz
4.750MHz
40.40MHz

+2.25°E

N
JULY 2020
ANNUAL RATE OF
CHANGE .05E

DCS SYRIAEFFECTIVE: 06 JUL 2021

DCS SYRIAEFFECTIVE: 06 JUL 2021



AIRPORT DIAGRAM

18909



NOT FOR REAL NAVIGATION

NICOSIA DISTRICT, NORTHERN CYPRUS
ERCAN INTERNATIONAL (LCEN)

18912

AIRPORT DIAGRAM

[USAF] SHU77-2406 [ICAO]

LAKATAMIA AIRBASE (LCRO)

LAKATAMIA DISTRICT, CYPRUS

TOWER 251.90MHz
120.20MHz
4.725MHz
40.35MHz

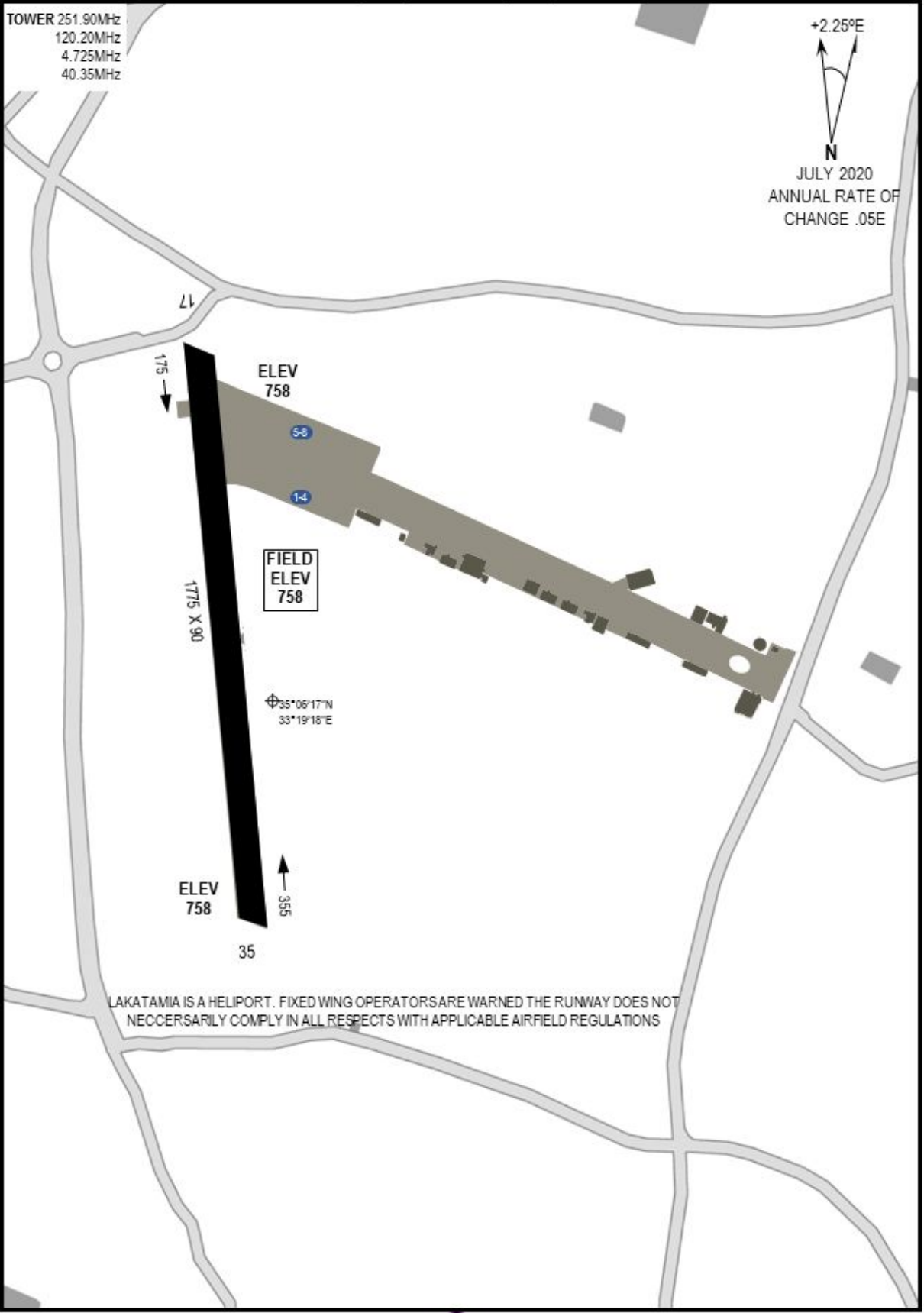
+2.25°E



JULY 2020
ANNUAL RATE OF
CHANGE .05E

DCS SYRIA EFFECTIVE: 06 JUL 2021

DCS SYRIA EFFECTIVE: 06 JUL 2021



LAKATAMIA IS A HELIPORT. FIXED WING OPERATORS ARE WARNED THE RUNWAY DOES NOT NECESSARILY COMPLY IN ALL RESPECTS WITH APPLICABLE AIRFIELD REGULATIONS

AIRPORT DIAGRAM

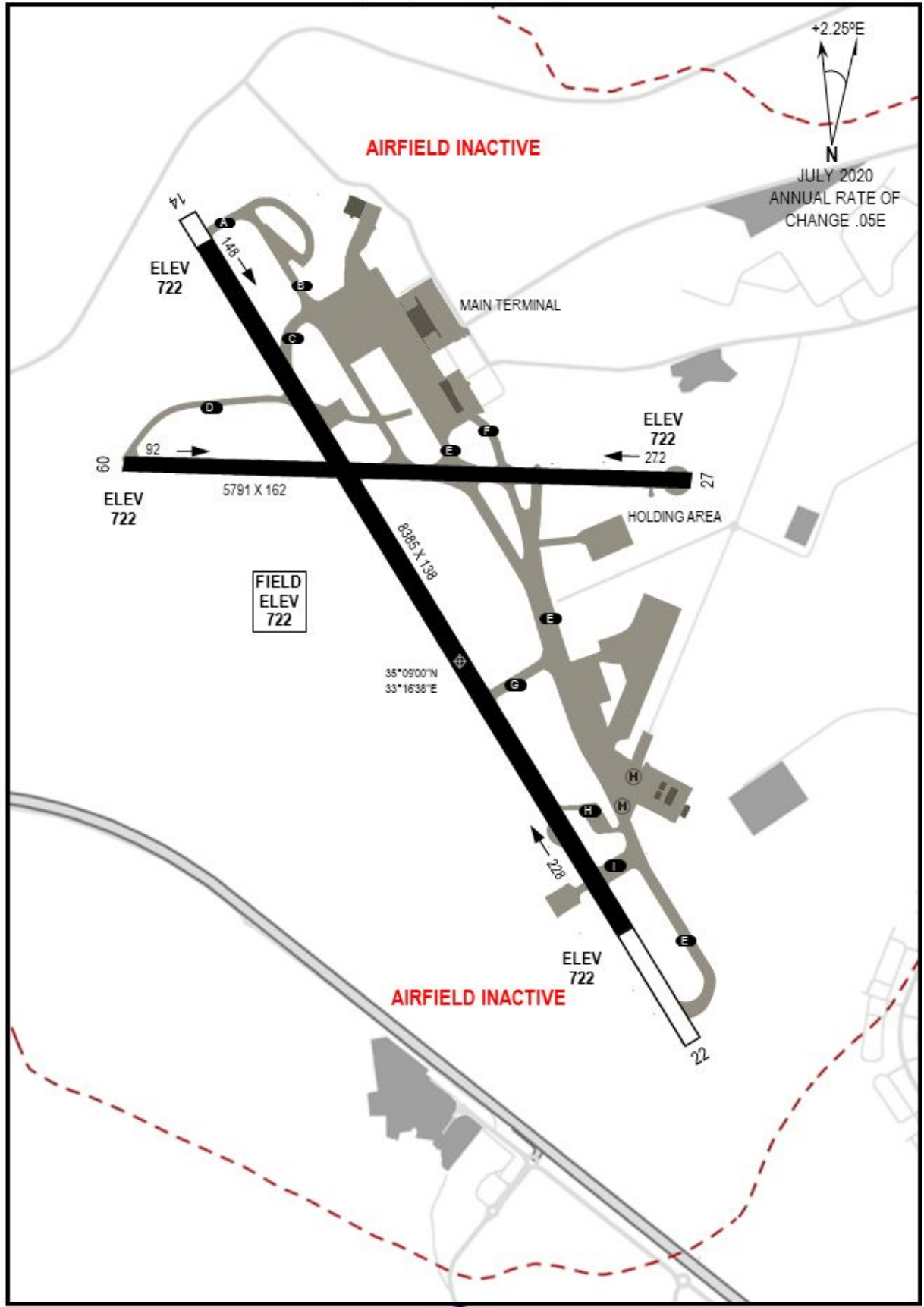
18912



NOT FOR REAL NAVIGATION

LAKATAMIA DISTRICT, CYPRUS

LAKATAMIA AIRBASE (LCRO)



DCS SYRIA EFFECTIVE: 06 JUL 2021

DCS SYRIA EFFECTIVE: 06 JUL 2021



18908

AIRPORT DIAGRAM

[USAF] SHU77-2406 [ICAO]

PINARBAŞI AIRBASE (AG1080)
NICOSIA DISTRICT, NORTHERN CYPRUS

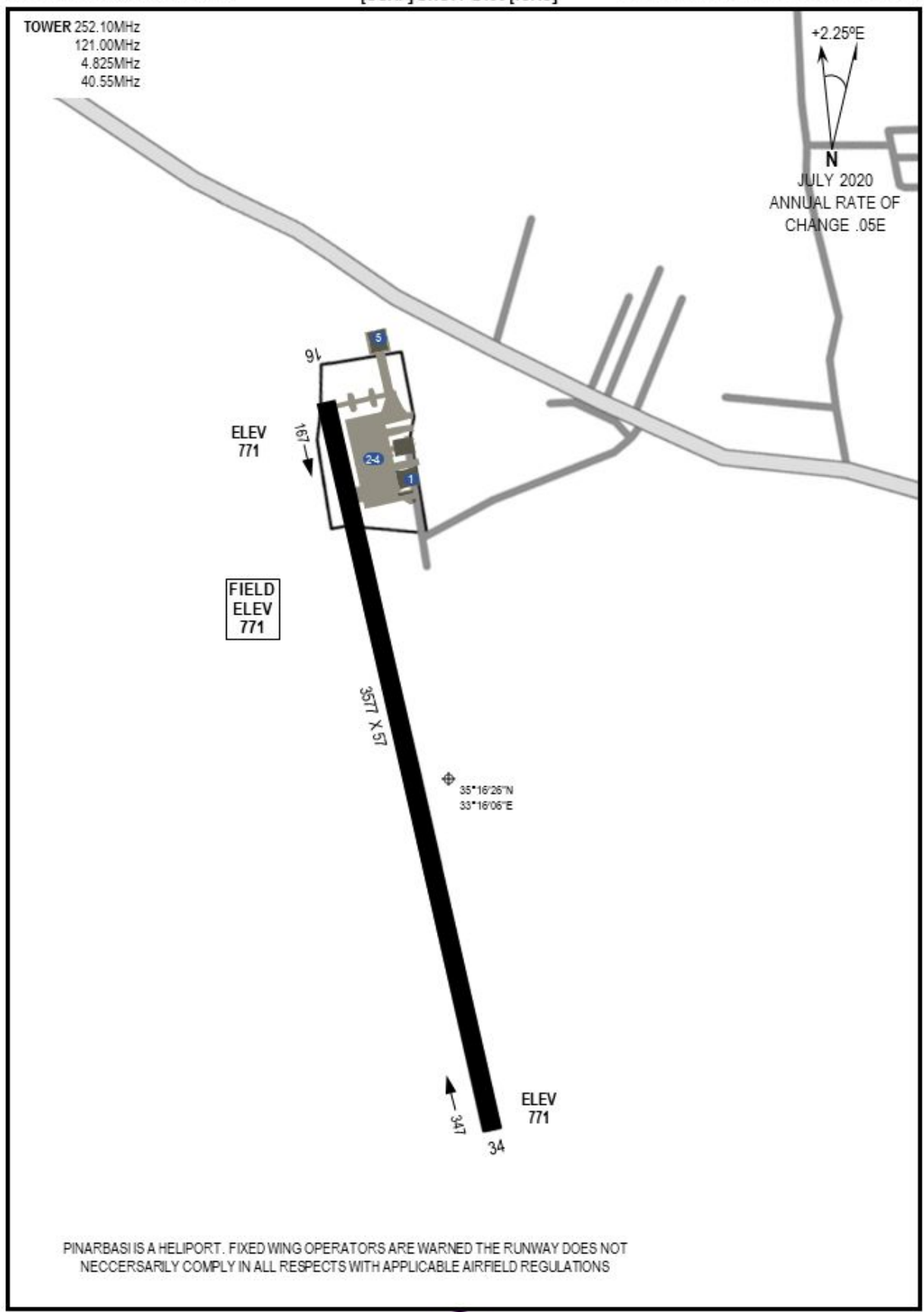
TOWER 252.10MHz
121.00MHz
4.825MHz
40.55MHz

+2.25°E

N
JULY 2020
ANNUAL RATE OF
CHANGE .05E

DCS SYRIAEFFECTIVE: 06 JUL 2021

DCS SYRIAEFFECTIVE: 06 JUL 2021



PINARBASI IS A HELIPORT. FIXED WING OPERATORS ARE WARNED THE RUNWAY DOES NOT NECESSARILY COMPLY IN ALL RESPECTS WITH APPLICABLE AIRFIELD REGULATIONS

AIRPORT DIAGRAM

18908



NOT FOR REAL NAVIGATION

NICOSIA DISTRICT, NORTHERN CYPRUS
PINARBAŞI AIRBASE (AG1080)