



*Task Force Dagger*

# Date/ Weather / Time

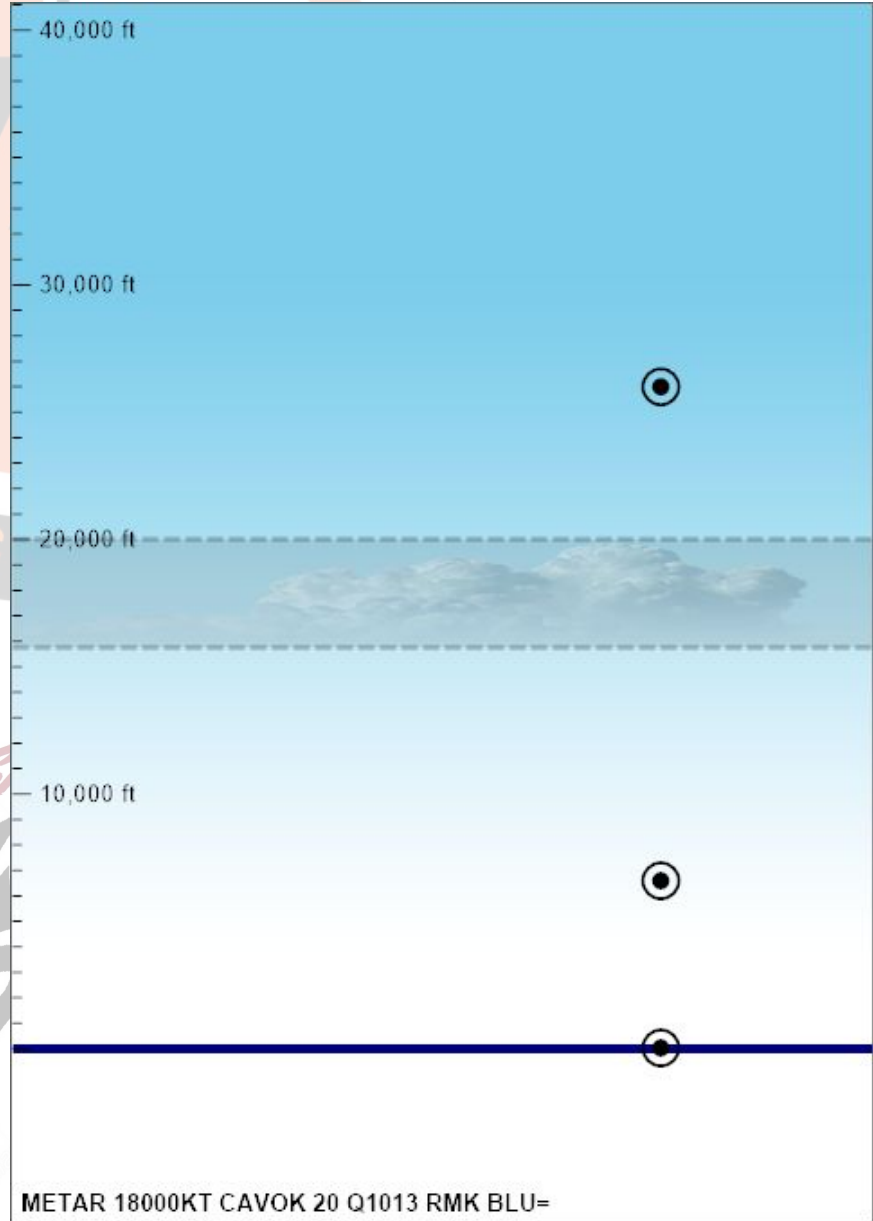
Mission Date: 21 June 2016

Mission Start Time: 0830

Winds: 0kts

Clouds: Broken / Overcast 16,000 ft -  
20,000 ft

Contrails: 26,000ft



*TAS*

*DAGGER*

# Target Intelligence

## Air Threats

### ● FIXED WING

- TU-95 Bears
  - KH-22/AS-4 Kitchen (INS)
    - Range: 600kn(320nm)

- TU-22 Blinders
  - KH-22/AS-4 Kitchen (INS)
    - Range: 600kn(320nm)

- SU-27 Flankers
  - R27(IR/SARH)
    - Range: 38nm
  - R73(IR)
    - Range: 8nm

- MIG-21 Fishbed
  - R-3 (IR/SARAH)
    - Range: 8nm
  - R60(IR)
    - Range: 3nm

- MIG-23 Flogger
  - R24(IR/SARH)
    - Range: 11nm
  - R60(IR)
    - Range: 3nm

### ● ROTOR

- KH-50
  - 30mm Auto Canon
  - Various A2G Munitions

- MI-24
  - GSh-23L Auto Cannon - Fixed Twin-Barrel
  - R60 (IR)
    - Range: 3nm

- MI-8
  - Wing mounted A2G Stores
  - Door mounted Small Arms

*TASK FORCE*

*DAGGER*

# Target Intelligence

## Counter-Air / Air Defence

- SAMs

- SA-8

- Seeker Type: SARH
- TR: 7.5nm
- Alt: 50ft / 21k ft

- SA-10 (S300) - GRUMBLE

- Seeker Type: SARH
- TR: 40nm / SR: 160nm
- Alt: 50ft / 150k ft

- SA-19 (SK22) - TUNGUSKA

- Seeker Type: SACLOS
- TR: 4nm / SR 6nm
- Alt: 0ft / 25k ft

- SA-18 - Grouse (MANPAD)

- Seeker Type: IR
- Range: 2.5NM
- Alt: 12,000 ft

- AAAs

- SA-19 (SK22) - TUNGUSKA

- Seeker Type: OPT / IR / RDR
- TR: 2nm / SR 6nm
- Alt: 0ft / 16k ft

- ZSU-23-4 - SHILKA

- Seeker Type: RADAR
- TR: 1.6nm / SR 12nm
- Alt: 0ft / 6.5k ft

*TASK FORCE*

*DAGGER*

# FREQUENCIES OVERVIEW

# TF Dagger - Rebellion

|                                 | UHF     | VHF     |  |  | VHF Preset | UHF Preset |
|---------------------------------|---------|---------|--|--|------------|------------|
| <b>GUARD</b>                    | 243.000 | 121.500 |  |  | 9          | 9          |
| <b>Killbox Charlie Common</b>   |         | 120.200 |  |  | 11         |            |
| <b>Killbox Hammer Common</b>    |         | 120.600 |  |  | 12         |            |
| <b>Killbox Anvil Common</b>     |         | 120.800 |  |  | 13         |            |
| <b>West Sector Hawkeye (AI)</b> | 252.000 | -       |  |  |            | 8          |
| <b>West Sector C2 (human)</b>   | 252.500 | -       |  |  |            | 7          |
| <b>East Sector AWACS (AI)</b>   | 251.000 | -       |  |  |            | 6          |
| <b>East Sector C2 Human</b>     | 251.500 | -       |  |  |            | 5          |

|                      | UHF     | VHF | TACAN     | ILS    | Active RWY |  | UHF Preset |
|----------------------|---------|-----|-----------|--------|------------|--|------------|
| <b>Senaki-Kolkhi</b> | 261.200 | -   | 31X (TSK) | 108.90 | 09         |  |            |
| <b>Sukhumi</b>       | 258.200 | -   | -         | -      | 12         |  | 2          |
| <b>Kutaisi</b>       | 250.200 | -   | 44X (KTS) | 109.75 | 07         |  | 1          |

|                               | UHF     | TACAN | Altitude  |                 | UHF Preset |
|-------------------------------|---------|-------|-----------|-----------------|------------|
| <b>Arco 1-1 (Boom)(WTB)</b>   | 255.500 | 11Y   | 26 000 ft | W of KTS        | 12         |
| <b>Arco 2-1 (Boom)(ETB)</b>   | 258.500 | 21Y   | 24 000 ft | E of KTS        | 13         |
| <b>Shell 3-1 (Boom)(ETL)</b>  | 257.000 | 31Y   | 14 000 ft | E of KTS        | 14         |
| <b>Texaco 4-1 (MPRS)(TKD)</b> | 254.000 | 41Y   | 14 000 ft | CVN-75 recovery | 15         |

|                                     | UHF     | VHF     | TACAN | ICLS | VHF Preset | UHF Preset |
|-------------------------------------|---------|---------|-------|------|------------|------------|
| <b>FARP- LONDON</b>                 |         | 127.500 | 15X   |      | 14         |            |
| <b>USS Harry S. Truman (CVN-75)</b> | 247.000 | -       | 11X   | 2    |            | 3          |
| <b>USS Tarawa (LHA-1)</b>           | 242.000 | -       | 14X   | 4    |            | 4          |

*DAGGER*

## WAYPOINT QUICK REFERENCE

|      |                 | Latitude   | Longitude   | Altitude |
|------|-----------------|------------|-------------|----------|
| WP 1 | FARP London     | N42:10.733 | E042:29.733 |          |
| WP 2 | Killbox Charlie | N43:02.647 | E040:58.954 | 500'     |
| WP 3 | Vody            | N44:13.760 | E043:04.276 | 1050'    |
| WP 4 | Nalchik         | N43:31.623 | E043:37.795 | 1410'    |
| WP 5 | Beslan          | N43:12.603 | E044:37.750 | 1771'    |
| WP 6 | Killbox Anvil   | N42:51.622 | E044:07.412 |          |
| WP 7 | Killbox Hammer  | N42:37.308 | E044:36.227 |          |
| WP 8 | Kutaisi         | N42:10.733 | E042:29.733 | 157'     |

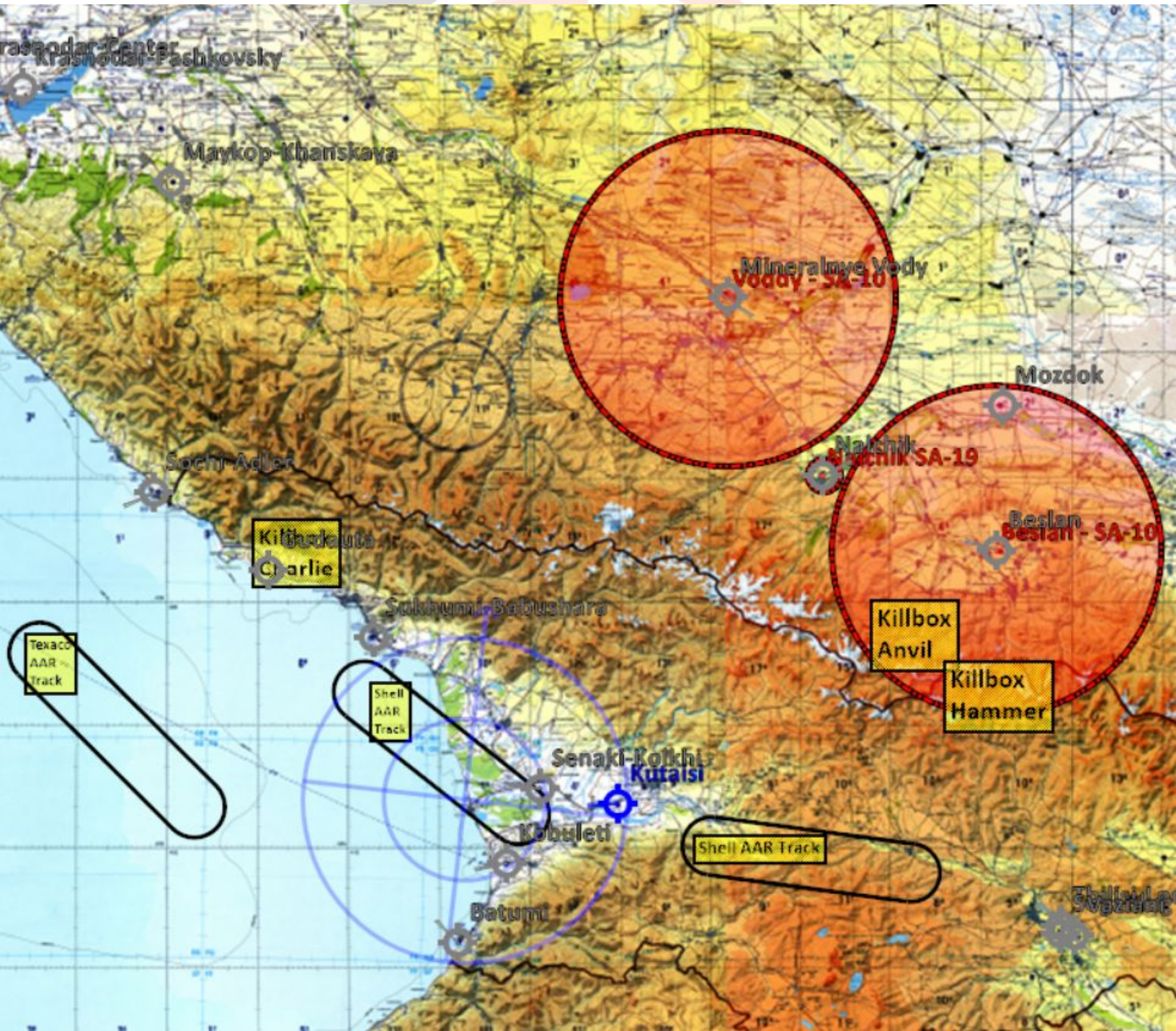
## DMPI QUICK REFERENCE

|  |                         | Latitude   | Longitude   | Altitude |
|--|-------------------------|------------|-------------|----------|
|  | Beslen - Fuel Farm      | N43:11.985 | E044:36.818 | 1670'    |
|  | Beslan - Warehouse      | N43:12.072 | E044:36.402 | 1663'    |
|  | Nalchik - Fuel Farm     | N43:31.256 | E043:38.007 | 1398'    |
|  | Nalchik - Warehouse     | N43:31.423 | E043.38.555 | 1378'    |
|  | Vody - Fuel Farm        | N44:13.947 | E043:05.355 | 1079'    |
|  | Vody - Warehouse        | N44:13.947 | E043:05.758 | 1010'    |
|  | Vody - Command Post     | N44:13.395 | E043:06.305 | 1010'    |
|  | Killbox Charlie - FOB 1 | N43:08.461 | E040:39.015 | 271'     |
|  | Killbox Charlie - FOB 2 | N43:10.631 | E040:43.096 | 391'     |
|  | Killbox Hammer - FOB    | N42:37.713 | E044:37.195 | 5524'    |
|  | Killbox Anvil - FOB     | N42:51.447 | E044:07.808 | 2961'    |

### *Rules of Engagement*

- Air Contacts must be CONFIRMED Hostile before fired on
  - In Killbox airspace
  - Hostile action on allied assets
  - Confirmed carrying weapons
  - Declaration of Hostile by C2



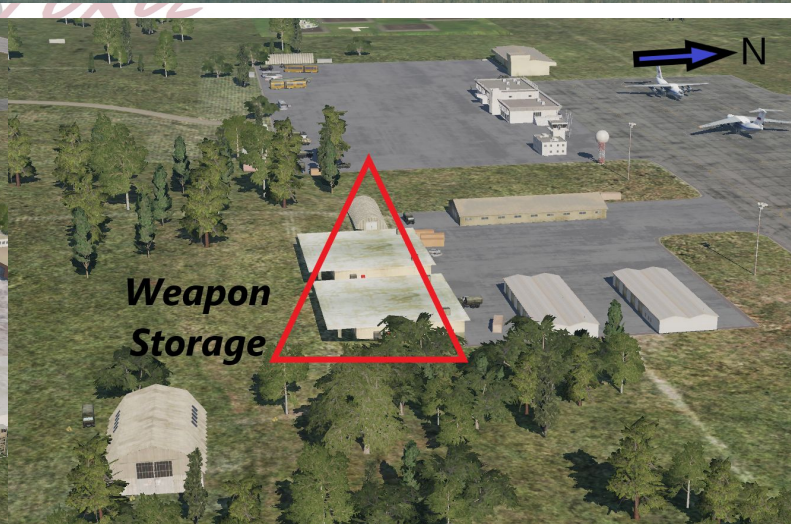
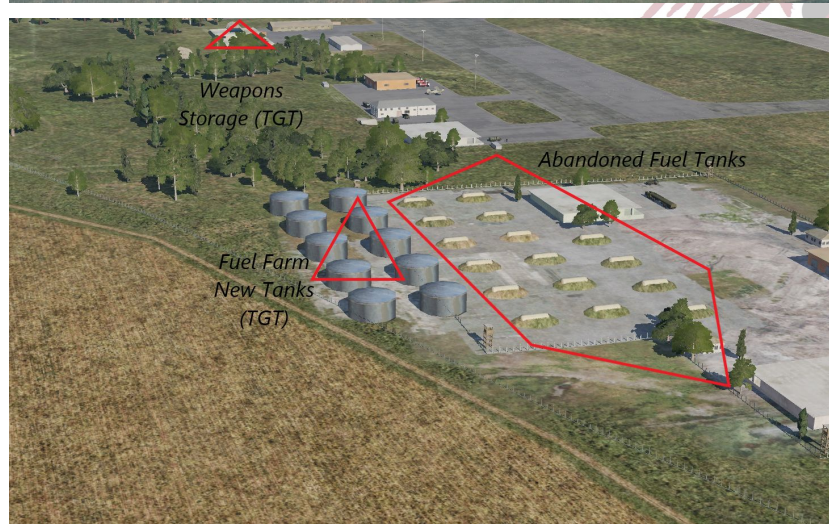
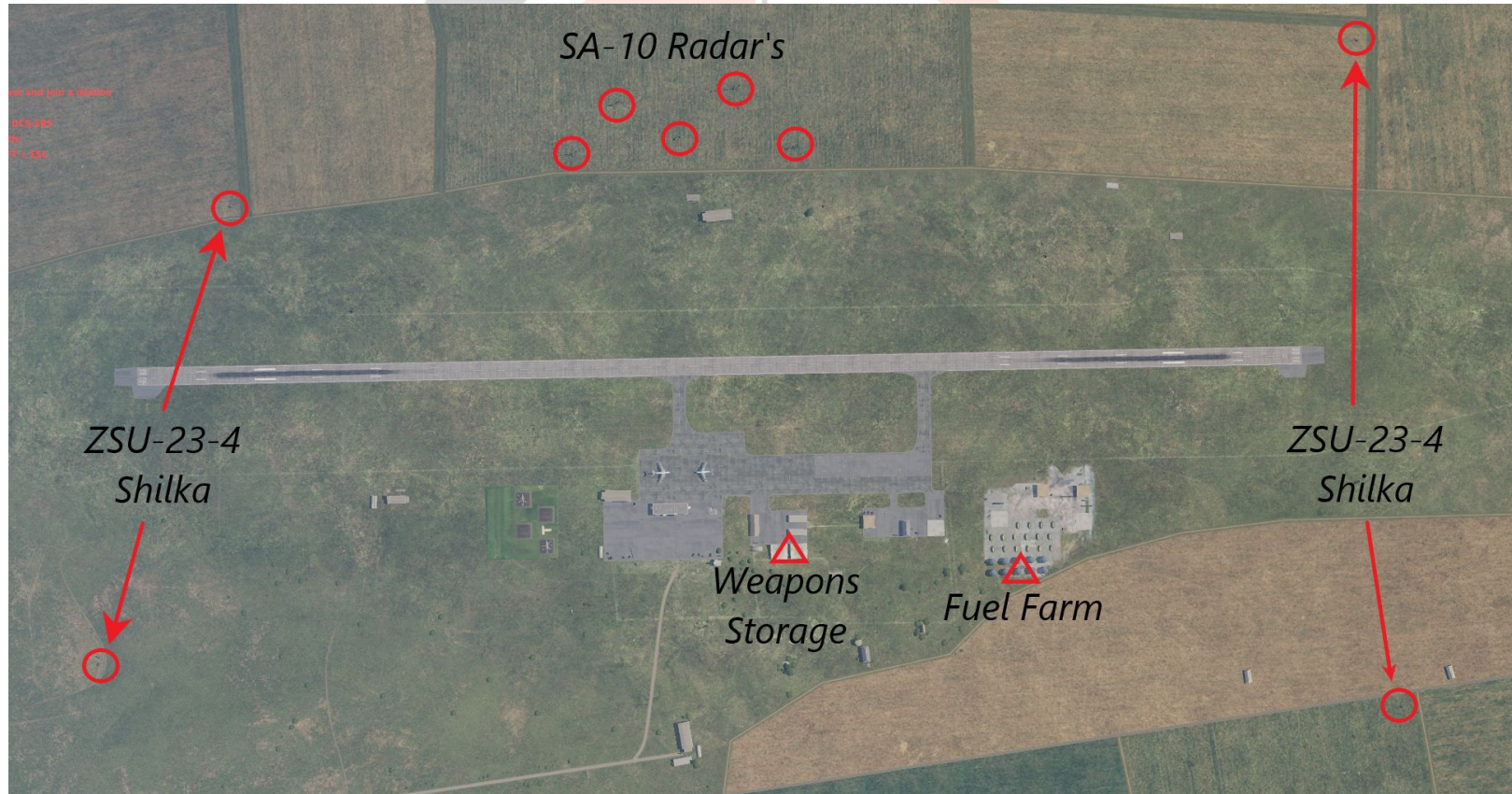


*DAGGER*



# Target Intelligence

## Beslan Airfield



DAGGER



# Target Intelligence

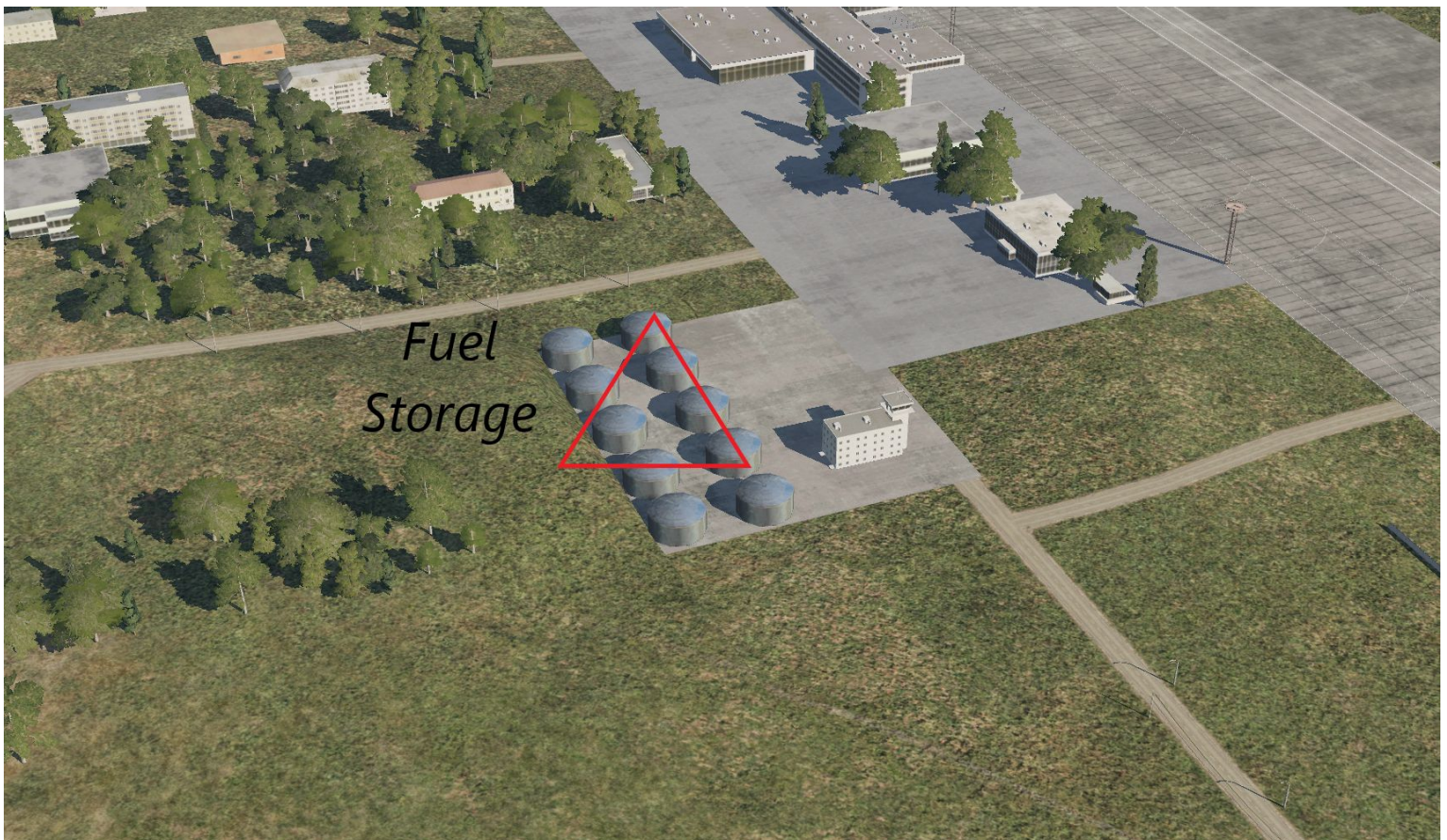
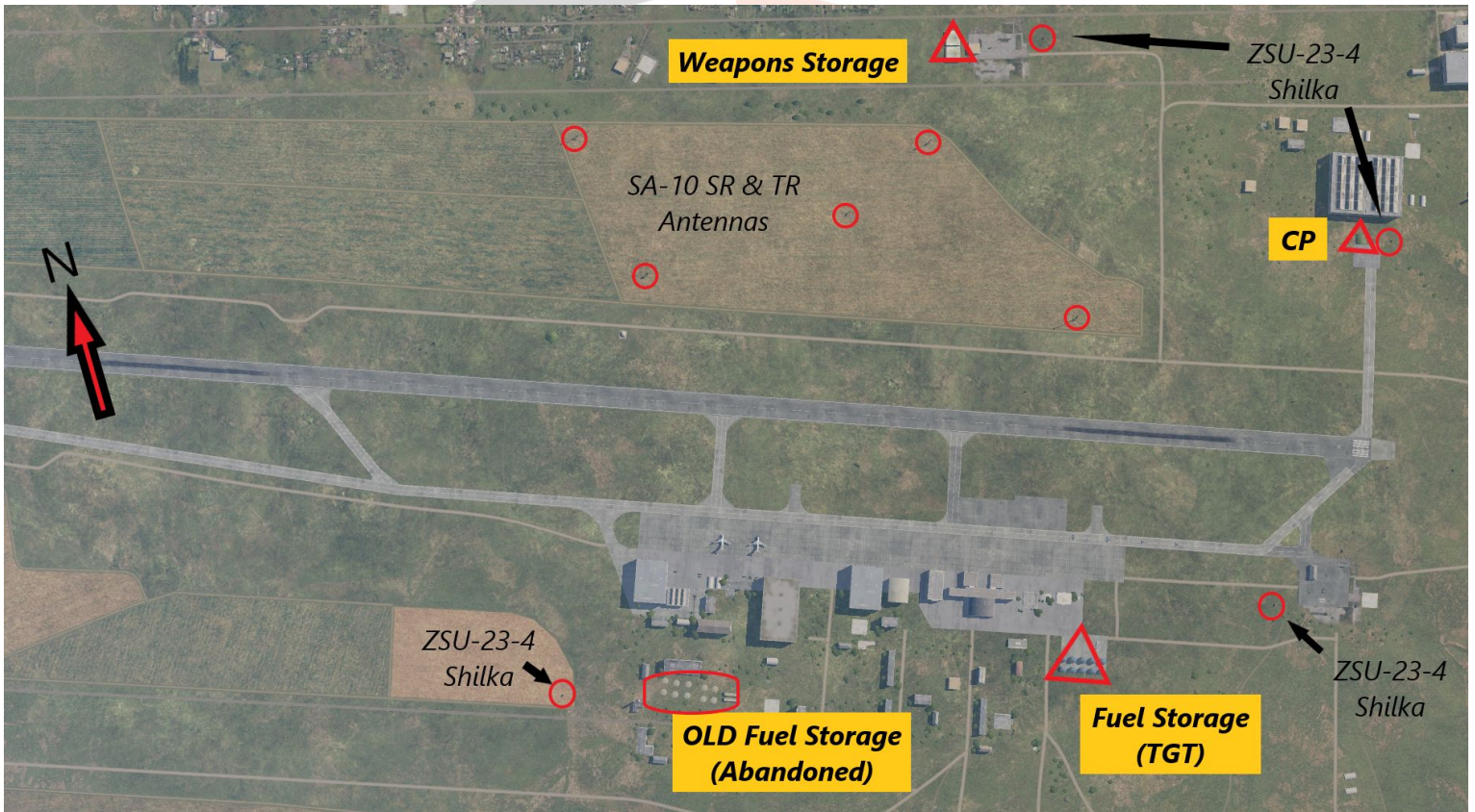
## Nalchik Airfield





# Target Intelligence

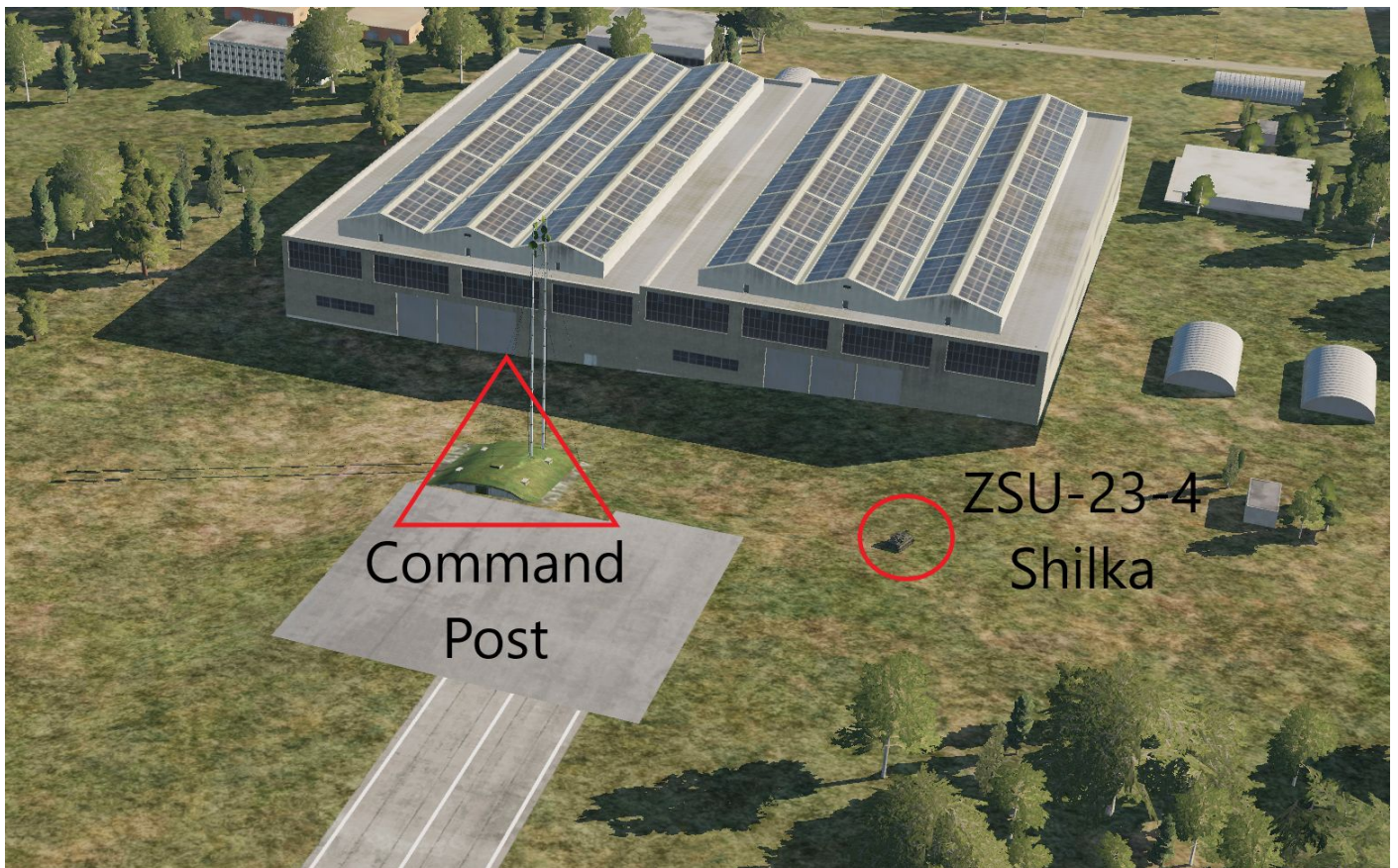
## Mineralnye-Vody Airfield



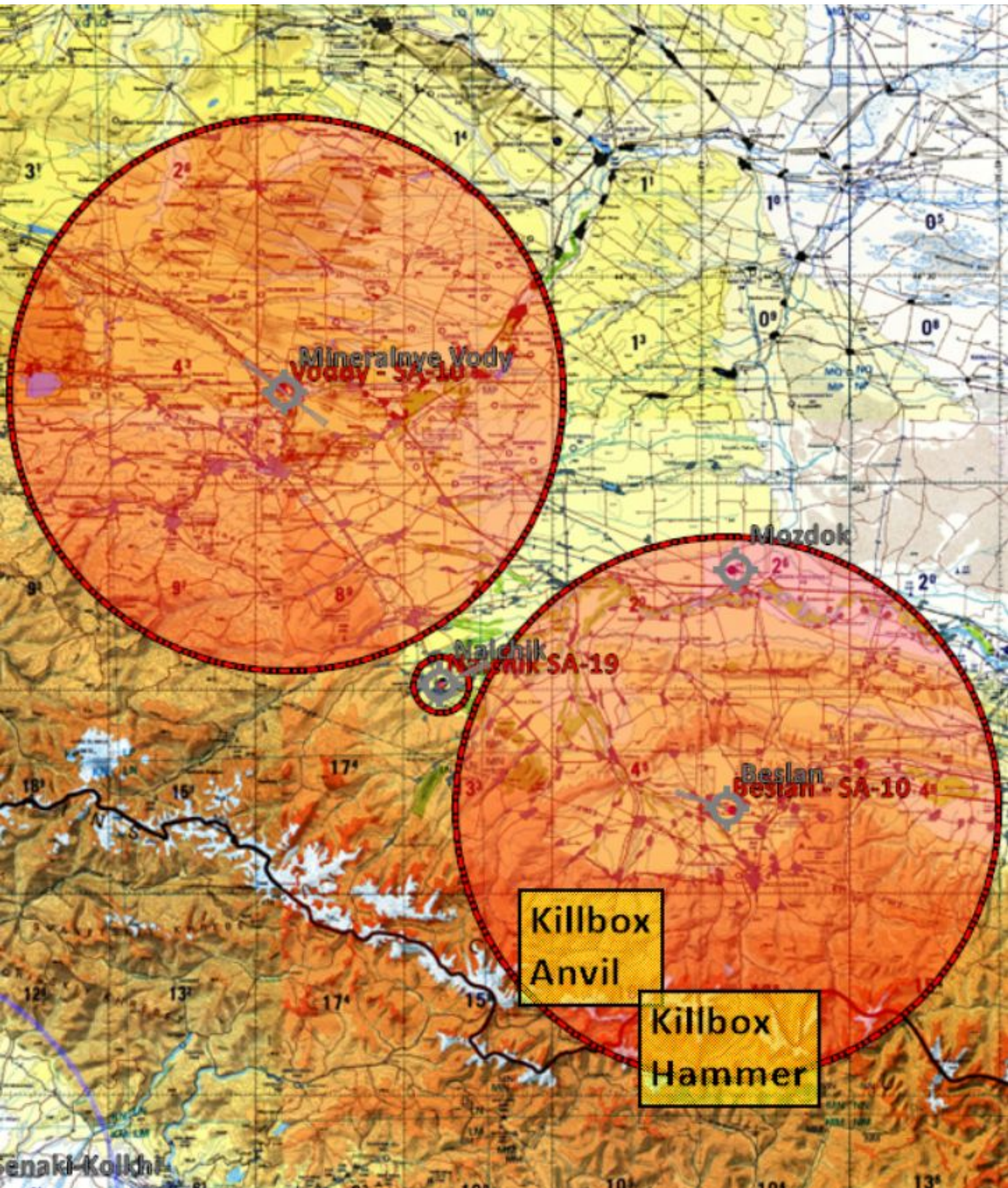


# Target Intelligence

## Mineralnye-Vody Airfield









# Target Intelligence

## Killbox's Anvil, Hammer

- Intelligence has information that Rebel Forces has set up one (1) Forward Operating Posts in each those areas.
- FOB are believed to be sites for MLRS or SCUD Companies, protected by a company of T-90's
- Suspected Counter-Air to consist of SA-9's and Shilka's

MLRS

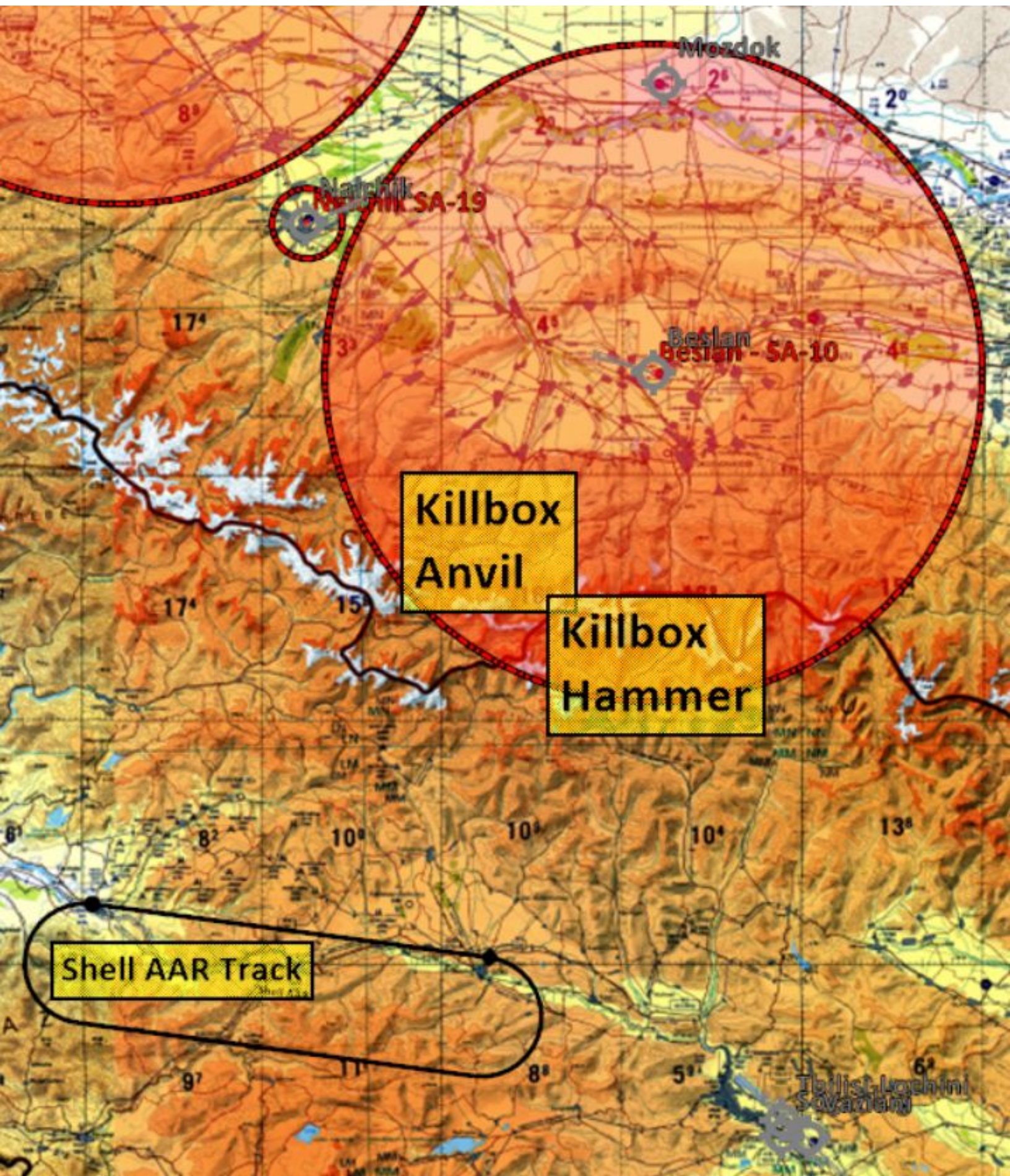


SCUD Launcher



*DAGGER*







# Target Intelligence

## Killbox Charlie

- Rebel Forces are using Gudata for Logistical Staging. Any targets of opportunity found are to be eliminated
  - Counter-Air suspected to be SA-6, SA-15's, Shilkas
- Intelligence has information that Rebel Forces has set up two(2) Forward Operating Posts in those areas.
- FOB are believed to be sites for MLRS or SCUD Companies, protected by a company of T-90's
  - Counter-Air suspected to consist of SA-6, SA-9's, SA-15's, and Shilkas

MLRS



SCUD Launcher





